

MAGE-1 Polyclonal Antibody

Catalog # AP70806

Product Information

Application	WB, IHC-P
Primary Accession	P43355
Reactivity	Human
Host	Rabbit
Clonality	Polyclonal
Calculated MW	34342

Additional Information

Gene ID	4100
Other Names	MAGEA1; MAGE1; MAGE1A; Melanoma-associated antigen 1; Antigen MZ2-E; Cancer/testis antigen 1.1; CT1.1; MAGE-1 antigen
Dilution	WB~~Western Blot: 1/500 - 1/2000. Immunohistochemistry: 1/100 - 1/300. ELISA: 1/10000. Not yet tested in other applications. IHC-P~~N/A
Format	Liquid in PBS containing 50% glycerol, 0.5% BSA and 0.09% (W/V) sodium azide.
Storage Conditions	-20°C

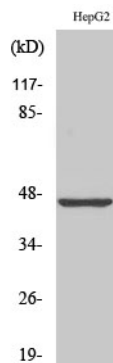
Protein Information

Name	MAGEA1
Synonyms	MAGE1, MAGE1A
Function	May be involved in transcriptional regulation through interaction with SNW1 and recruiting histone deacetylase HDAC1. May inhibit notch intracellular domain (NICD) transactivation. May play a role in embryonal development and tumor transformation or aspects of tumor progression. Antigen recognized on a melanoma by autologous cytolytic T-lymphocytes.
Cellular Location	Cytoplasm. Nucleus.
Tissue Location	Expressed in many tumors of several types, such as melanoma, head and neck squamous cell carcinoma, lung carcinoma and breast carcinoma, but not in normal tissues except for testes. Never expressed in kidney tumors, leukemias and lymphomas

Background

May be involved in transcriptional regulation through interaction with SNW1 and recruiting histone deactelyase HDAC1. May inhibit notch intracellular domain (NICD) transactivation. May play a role in embryonal development and tumor transformation or aspects of tumor progression. Antigen recognized on a melanoma by autologous cytolytic T-lymphocytes.

Images



Western Blot analysis of various cells using MAGE-1 Polyclonal Antibody

Please note: All products are 'FOR RESEARCH USE ONLY. NOT FOR USE IN DIAGNOSTIC OR THERAPEUTIC PROCEDURES'.