

# MARCH3 Polyclonal Antibody

Catalog # AP70827

## Product Information

---

<b>Application</b>	WB, IHC-P
<b>Primary Accession</b>	<a href="#">Q86UD3</a>
<b>Reactivity</b>	Human, Mouse, Rat, Monkey
<b>Host</b>	Rabbit
<b>Clonality</b>	Polyclonal
<b>Calculated MW</b>	28504

## Additional Information

---

<b>Gene ID</b>	115123
<b>Other Names</b>	MARCH3; RNF173; E3 ubiquitin-protein ligase MARCH3; Membrane-associated RING finger protein 3; Membrane-associated RING-CH protein III; MARCH-III; RING finger protein 173
<b>Dilution</b>	WB~~Western Blot: 1/500 - 1/2000. Immunohistochemistry: 1/100 - 1/300. ELISA: 1/40000. Not yet tested in other applications. IHC-P~~N/A
<b>Format</b>	Liquid in PBS containing 50% glycerol, 0.5% BSA and 0.09% (W/V) sodium azide.
<b>Storage Conditions</b>	-20°C

## Protein Information

---

<b>Name</b>	MARCHF3 ( <a href="#">HGNC:28728</a> )
<b>Synonyms</b>	MARCH3, RNF173
<b>Function</b>	E3 ubiquitin-protein ligase which may be involved in endosomal trafficking. E3 ubiquitin ligases accept ubiquitin from an E2 ubiquitin-conjugating enzyme in the form of a thioester and then directly transfer the ubiquitin to targeted substrates.
<b>Cellular Location</b>	Cytoplasmic vesicle membrane; Multi-pass membrane protein. Early endosome membrane; Multi-pass membrane protein

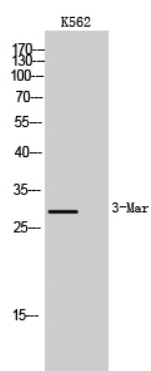
## Background

---

E3 ubiquitin-protein ligase which may be involved in endosomal trafficking. E3 ubiquitin ligases accept ubiquitin from an E2 ubiquitin-conjugating enzyme in the form of a thioester and then directly transfer the ubiquitin to targeted substrates.

## Images

---



Western Blot analysis of K562 cells using MARCH3 Polyclonal Antibody

Please note: All products are 'FOR RESEARCH USE ONLY. NOT FOR USE IN DIAGNOSTIC OR THERAPEUTIC PROCEDURES'.