

# GALK2 Antibody (N-term)

Purified Rabbit Polyclonal Antibody (Pab)

Catalog # AP7082a

## Product Information

---

Application	WB, E
Primary Accession	<a href="#">Q01415</a>
Reactivity	Human
Host	Rabbit
Clonality	Polyclonal
Isotype	Rabbit IgG
Clone Names	RB5320
Calculated MW	50378
Antigen Region	1-30

## Additional Information

---

Gene ID	2585
Other Names	N-acetylgalactosamine kinase, GalNAc kinase, Galactokinase 2, GALK2, GK2
Target/Specificity	This GALK2 antibody is generated from rabbits immunized with a KLH conjugated synthetic peptide between 1-30 amino acids from the N-terminal region of human GALK2.
Dilution	WB~~1:1000 E~~Use at an assay dependent concentration.
Format	Purified polyclonal antibody supplied in PBS with 0.09% (W/V) sodium azide. This antibody is prepared by Saturated Ammonium Sulfate (SAS) precipitation followed by dialysis against PBS.
Storage	Maintain refrigerated at 2-8°C for up to 2 weeks. For long term storage store at -20°C in small aliquots to prevent freeze-thaw cycles.
Precautions	GALK2 Antibody (N-term) is for research use only and not for use in diagnostic or therapeutic procedures.

## Protein Information

---

Name	GALK2
Synonyms	GK2
Function	Acts on GalNAc. Also acts as a galactokinase when galactose is present at high concentrations. May be involved in a salvage pathway for the reutilization of free GalNAc derived from the degradation of complex

carbohydrates.

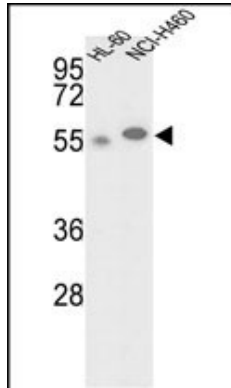
## Background

---

GALK2 is a highly efficient N-acetylgalactosamine (GalNAc) kinase, which has galactokinase activity when galactose is present at high concentrations.

## Images

---



Western blot analysis of hGALK2-M1 (Cat.#AP7082a) in HL-60, NCI-H460 cell line lysates (35ug/lane). GALK2 (arrow) was detected using the purified Pab.

Please note: All products are 'FOR RESEARCH USE ONLY. NOT FOR USE IN DIAGNOSTIC OR THERAPEUTIC PROCEDURES'.