

GALK2 Antibody (C-term)

Purified Rabbit Polyclonal Antibody (Pab)

Catalog # AP7082b

Product Information

Application	WB, E
Primary Accession	Q01415
Reactivity	Human
Host	Rabbit
Clonality	Polyclonal
Isotype	Rabbit IgG
Clone Names	RB5322
Calculated MW	50378
Antigen Region	404-434

Additional Information

Gene ID	2585
Other Names	N-acetylgalactosamine kinase, GalNAc kinase, Galactokinase 2, GALK2, GK2
Target/Specificity	This GALK2 antibody is generated from rabbits immunized with a KLH conjugated synthetic peptide between 404-434 amino acids from the C-terminal region of human GALK2.
Dilution	WB~~1:1000 E~~Use at an assay dependent concentration.
Format	Purified polyclonal antibody supplied in PBS with 0.09% (W/V) sodium azide. This antibody is prepared by Saturated Ammonium Sulfate (SAS) precipitation followed by dialysis against PBS.
Storage	Maintain refrigerated at 2-8°C for up to 2 weeks. For long term storage store at -20°C in small aliquots to prevent freeze-thaw cycles.
Precautions	GALK2 Antibody (C-term) is for research use only and not for use in diagnostic or therapeutic procedures.

Protein Information

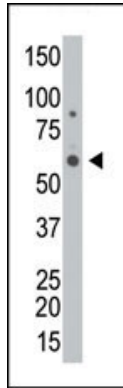
Name	GALK2
Synonyms	GK2
Function	Acts on GalNAc. Also acts as a galactokinase when galactose is present at high concentrations. May be involved in a salvage pathway for the reutilization of free GalNAc derived from the degradation of complex

carbohydrates.

Background

GALK2 is a highly efficient N-acetylgalactosamine (GalNAc) kinase, which has galactokinase activity when galactose is present at high concentrations.

Images



The anti-GALK2 Pab (Cat. #AP7082b) is used in Western blot to detect GALK2 in HL-60 cell lysate.

Please note: All products are 'FOR RESEARCH USE ONLY. NOT FOR USE IN DIAGNOSTIC OR THERAPEUTIC PROCEDURES'.