

MASP-2 Polyclonal Antibody

Catalog # AP70839

Product Information

Application	WB
Primary Accession	O00187
Reactivity	Human
Host	Rabbit
Clonality	Polyclonal
Calculated MW	75702

Additional Information

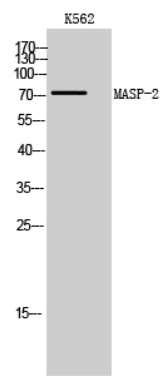
Gene ID	10747
Other Names	MASP2; Mannan-binding lectin serine protease 2; MBL-associated serine protease 2; Mannose-binding protein-associated serine protease 2; MASP-2
Dilution	WB~~Western Blot: 1/500 - 1/2000. ELISA: 1/20000. Not yet tested in other applications.
Format	Liquid in PBS containing 50% glycerol, 0.5% BSA and 0.09% (W/V) sodium azide.
Storage Conditions	-20°C

Protein Information

Name	MASP2
Function	Serum protease that plays an important role in the activation of the complement system via mannose-binding lectin. After activation by auto-catalytic cleavage it cleaves C2 and C4, leading to their activation and to the formation of C3 convertase.
Cellular Location	Secreted.
Tissue Location	Plasma.

Background

Serum protease that plays an important role in the activation of the complement system via mannose-binding lectin. After activation by auto-catalytic cleavage it cleaves C2 and C4, leading to their activation and to the formation of C3 convertase.



Western Blot analysis of K562 cells using MASP-2 Polyclonal Antibody

Please note: All products are 'FOR RESEARCH USE ONLY. NOT FOR USE IN DIAGNOSTIC OR THERAPEUTIC PROCEDURES'.