

Maspin Polyclonal Antibody

Catalog # AP70840

Product Information

Application	WB, IHC-P, IF
Primary Accession	P36952
Reactivity	Human, Mouse, Rat
Host	Rabbit
Clonality	Polyclonal
Calculated MW	42100

Additional Information

Gene ID	5268
Other Names	SERPINB5; PI5; Serpin B5; Maspin; Peptidase inhibitor 5; PI-5
Dilution	WB~~Western Blot: 1/500 - 1/2000. Immunohistochemistry: 1/100 - 1/300. Immunofluorescence: 1/200 - 1/1000. ELISA: 1/20000. Not yet tested in other applications. IHC-P~~N/A IF~~1:50~200
Format	Liquid in PBS containing 50% glycerol, 0.5% BSA and 0.09% (W/V) sodium azide.
Storage Conditions	-20°C

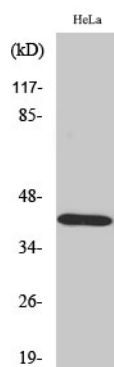
Protein Information

Name	SERPINB5
Synonyms	PI5
Function	Tumor suppressor. It blocks the growth, invasion, and metastatic properties of mammary tumors. As it does not undergo the S (stressed) to R (relaxed) conformational transition characteristic of active serpins, it exhibits no serine protease inhibitory activity.
Cellular Location	Secreted, extracellular space.
Tissue Location	Normal mammary epithelial cells.

Background

Tumor suppressor. It blocks the growth, invasion, and metastatic properties of mammary tumors. As it does not undergo the S (stressed) to R (relaxed) conformational transition characteristic of active serpins, it exhibits no serine protease inhibitory activity.

Images



Western Blot analysis of various cells using Maspin Polyclonal Antibody

Please note: All products are 'FOR RESEARCH USE ONLY. NOT FOR USE IN DIAGNOSTIC OR THERAPEUTIC PROCEDURES'.