

# MCT13 Polyclonal Antibody

Catalog # AP70866

## Product Information

---

<b>Application</b>	WB
<b>Primary Accession</b>	<a href="#">Q7RTY0</a>
<b>Reactivity</b>	Human
<b>Host</b>	Rabbit
<b>Clonality</b>	Polyclonal
<b>Calculated MW</b>	44992

## Additional Information

---

<b>Gene ID</b>	201232
<b>Other Names</b>	SLC16A13; MCT13; Monocarboxylate transporter 13; MCT 13; Solute carrier family 16 member 13
<b>Dilution</b>	WB~~Western Blot: 1/500 - 1/2000. ELISA: 1/5000. Not yet tested in other applications.
<b>Format</b>	Liquid in PBS containing 50% glycerol, 0.5% BSA and 0.09% (W/V) sodium azide.
<b>Storage Conditions</b>	-20°C

## Protein Information

---

<b>Name</b>	SLC16A13
<b>Synonyms</b>	MCT13
<b>Function</b>	Proton-linked monocarboxylate transporter. May catalyze the transport of monocarboxylates across the plasma membrane.
<b>Cellular Location</b>	Golgi apparatus membrane; Multi-pass membrane protein. Cell membrane; Multi-pass membrane protein

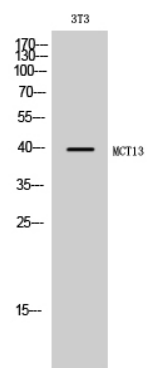
## Background

---

Proton-linked monocarboxylate transporter. May catalyze the transport of monocarboxylates across the plasma membrane.

## Images

---



## Western Blot analysis of 3T3 cells using MCT13 Polyclonal Antibody

Please note: All products are 'FOR RESEARCH USE ONLY. NOT FOR USE IN DIAGNOSTIC OR THERAPEUTIC PROCEDURES'.