

MCT4 Polyclonal Antibody

Catalog # AP70868

Product Information

Application	WB
Primary Accession	O15427
Reactivity	Human, Mouse, Rat
Host	Rabbit
Clonality	Polyclonal
Calculated MW	49469

Additional Information

Gene ID	9123
Other Names	SLC16A3; MCT4; Monocarboxylate transporter 4; MCT 4; Solute carrier family 16 member 3
Dilution	WB~~Western Blot: 1/500 - 1/2000. ELISA: 1/40000. Not yet tested in other applications.
Format	Liquid in PBS containing 50% glycerol, 0.5% BSA and 0.09% (W/V) sodium azide.
Storage Conditions	-20°C

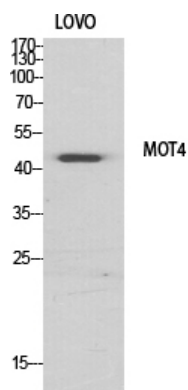
Protein Information

Name	SLC16A3
Synonyms	MCT3 {ECO:0000303 PubMed:9425115}, MCT4
Function	Proton-dependent transporter of monocarboxylates such as L- lactate and pyruvate (PubMed: 11101640 , PubMed: 23935841 , PubMed: 31719150). Plays a predominant role in L-lactate efflux from highly glycolytic cells (By similarity).
Cellular Location	Cell membrane; Multi-pass membrane protein. Basolateral cell membrane; Multi-pass membrane protein. Note=Plasma membrane localization is dependent upon the BSG/MCT4 interaction (PubMed:10921872). Basolateral sorting signals (BLSS) in C-terminal cytoplasmic tail ensure its basolateral expression in polarised epithelial cells (PubMed:21199217)
Tissue Location	Highly expressed in skeletal muscle.

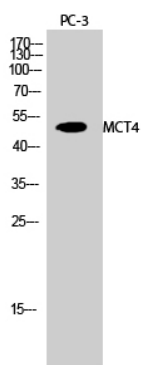
Background

Proton-linked monocarboxylate transporter. Catalyzes the rapid transport across the plasma membrane of many monocarboxylates such as lactate, pyruvate, branched-chain oxo acids derived from leucine, valine and isoleucine, and the ketone bodies acetoacetate, beta-hydroxybutyrate and acetate (By similarity).

Images



Western Blot analysis of various cells using MCT4
Polyclonal Antibody diluted at 1 : 500



Western Blot analysis of PC-3 cells using MCT4 Polyclonal
Antibody diluted at 1 : 500

Please note: All products are 'FOR RESEARCH USE ONLY. NOT FOR USE IN DIAGNOSTIC OR THERAPEUTIC PROCEDURES'.