

# MEF-2B Polyclonal Antibody

Catalog # AP70884

## Product Information

---

|                          |                        |
|--------------------------|------------------------|
| <b>Application</b>       | WB, IHC-P              |
| <b>Primary Accession</b> | <a href="#">Q02080</a> |
| <b>Reactivity</b>        | Human, Mouse           |
| <b>Host</b>              | Rabbit                 |
| <b>Clonality</b>         | Polyclonal             |
| <b>Calculated MW</b>     | 38639                  |

## Additional Information

---

|                           |                                                                                                                                         |
|---------------------------|-----------------------------------------------------------------------------------------------------------------------------------------|
| <b>Gene ID</b>            | 100271849;4207                                                                                                                          |
| <b>Other Names</b>        | MEF2B; XMEF2; Myocyte-specific enhancer factor 2B; RSRFR2; Serum response factor-like protein 2                                         |
| <b>Dilution</b>           | WB~~Western Blot: 1/500 - 1/2000. Immunohistochemistry: 1/100 - 1/300. ELISA: 1/10000. Not yet tested in other applications. IHC-P~~N/A |
| <b>Format</b>             | Liquid in PBS containing 50% glycerol, 0.5% BSA and 0.09% (W/V) sodium azide.                                                           |
| <b>Storage Conditions</b> | -20°C                                                                                                                                   |

## Protein Information

---

|                          |                                                                                                                                                                                                                                                                |
|--------------------------|----------------------------------------------------------------------------------------------------------------------------------------------------------------------------------------------------------------------------------------------------------------|
| <b>Name</b>              | MEF2B                                                                                                                                                                                                                                                          |
| <b>Synonyms</b>          | XMEF2                                                                                                                                                                                                                                                          |
| <b>Function</b>          | Transcriptional activator which binds specifically to the MEF2 element, 5'-YTA[AT](4)TAR-3', found in numerous muscle-specific genes. Activates transcription via this element. May be involved in muscle-specific and/or growth factor-related transcription. |
| <b>Cellular Location</b> | Nucleus.                                                                                                                                                                                                                                                       |
| <b>Tissue Location</b>   | Expressed in skeletal and cardiac muscle and brain.                                                                                                                                                                                                            |

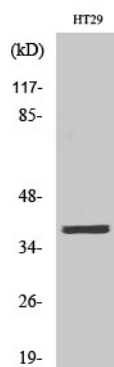
## Background

---

Transcriptional activator which binds specifically to the MEF2 element, 5'-YTA[AT](4)TAR-3', found in numerous muscle-specific genes. Activates transcription via this element. May be involved in muscle-specific and/or growth factor-related transcription.

## Images

---



Western Blot analysis of various cells using MEF-2B Polyclonal Antibody cells nucleus extracted by Minute TM Cytoplasmic and Nuclear Fractionation kit (SC-003, Inventbiotech, MN, USA).

Please note: All products are 'FOR RESEARCH USE ONLY. NOT FOR USE IN DIAGNOSTIC OR THERAPEUTIC PROCEDURES'.