

MGST2 Polyclonal Antibody

Catalog # AP70935

Product Information

Application	WB, E, IHC-P
Primary Accession	Q99735
Reactivity	Human, Rat, Mouse
Host	Rabbit
Clonality	Polyclonal
Calculated MW	16621

Additional Information

Gene ID	4258
Other Names	MGST2; GST2; Microsomal glutathione S-transferase 2; Microsomal GST-2; Microsomal GST-II
Dilution	WB~~Western Blot: 1/500 - 1/2000. ELISA: 1/10000. Not yet tested in other applications. E~~N/A IHC-P~~N/A
Format	Liquid in PBS containing 50% glycerol, 0.5% BSA and 0.09% (W/V) sodium azide.
Storage Conditions	-20°C

Protein Information

Name	MGST2
Synonyms	GST2
Function	Catalyzes several different glutathione-dependent reactions (PubMed: 23409838 , PubMed: 26066610 , PubMed: 26656251 , PubMed: 8703034 , PubMed: 9278457). Catalyzes the glutathione-dependent reduction of lipid hydroperoxides, such as 5-HPETE (PubMed: 23409838 , PubMed: 9278457). Has glutathione transferase activity, toward xenobiotic electrophiles, such as 1-chloro-2, 4-dinitrobenzene (CDNB) (PubMed: 23409838 , PubMed: 8703034). Also catalyzes the conjugation of leukotriene A4 with reduced glutathione to form leukotriene C4 (LTC4) (PubMed: 23409838 , PubMed: 26656251). Involved in oxidative DNA damage induced by ER stress and anticancer agents by activating LTC4 biosynthetic machinery in nonimmune cells (PubMed: 26656251).
Cellular Location	Endoplasmic reticulum membrane; Multi-pass membrane protein. Microsome membrane; Multi- pass membrane protein

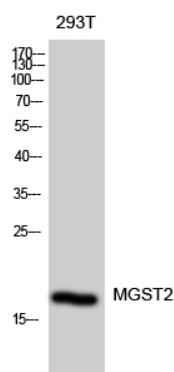
Tissue Location

Liver, spleen, skeletal muscle, heart, adrenals, pancreas, prostate, testis, fetal liver, and fetal spleen. Very low expression in lung, brain, placenta and bone marrow (PubMed:8703034) Abundantly expressed in human umbilical vein endothelial cells (at protein level) (PubMed:11322876).

Background

Can catalyze the production of LTC₄ from LTA₄ and reduced glutathione. Can catalyze the conjugation of 1-chloro-2,4- dinitrobenzene with reduced glutathione.

Images



Western Blot analysis of 293T cells using MGST2
Polyclonal Antibody diluted at 1 : 2000

Please note: All products are 'FOR RESEARCH USE ONLY. NOT FOR USE IN DIAGNOSTIC OR THERAPEUTIC PROCEDURES'.