

# MIA2 Polyclonal Antibody

Catalog # AP70939

## Product Information

---

Application	WB
Primary Accession	<a href="#">Q96PC5</a>
Reactivity	Human
Host	Rabbit
Clonality	Polyclonal
Calculated MW	159836

## Additional Information

---

Gene ID	4253
Other Names	MIA2; Melanoma inhibitory activity protein 2
Dilution	WB~~Western Blot: 1/500 - 1/2000. ELISA: 1/20000. Not yet tested in other applications.
Format	Liquid in PBS containing 50% glycerol, 0.5% BSA and 0.09% (W/V) sodium azide.
Storage Conditions	-20°C

## Protein Information

---

Name	MIA2 ( <a href="#">HGNC:18432</a> )
Function	Plays a role in the transport of cargos that are too large to fit into COPII-coated vesicles and require specific mechanisms to be incorporated into membrane-bound carriers and exported from the endoplasmic reticulum (PubMed: <a href="#">21525241</a> , PubMed: <a href="#">25202031</a> , PubMed: <a href="#">27138255</a> , PubMed: <a href="#">27170179</a> ). Plays a role in the secretion of lipoproteins, pre-chylomicrons and pre-VLDLs, by participating in their export from the endoplasmic reticulum (PubMed: <a href="#">27138255</a> ). Thereby, may play a role in cholesterol and triglyceride homeostasis (By similarity). Required for collagen VII (COL7A1) secretion by loading COL7A1 into transport carriers and recruiting PREB/SEC12 at the endoplasmic reticulum exit sites (PubMed: <a href="#">21525241</a> , PubMed: <a href="#">25202031</a> , PubMed: <a href="#">27170179</a> ).
Cellular Location	Endoplasmic reticulum membrane; Single-pass membrane protein. Note=Localizes to endoplasmic reticulum exit sites (ERES), also known as transitional endoplasmic reticulum (tER).
Tissue Location	Highly expressed in liver and weakly in testis. Expression was higher in patients with severe fibrosis or inflammation and chronic hepatitis

(PubMed:12586826). Isoform 1 is specifically expressed in lung, testis, small intestine, colon, pancreas, kidney, liver and prostate (PubMed:27138255). Isoform 8 is expressed only in testis (at the protein level). Isoform 8 (at protein level) and isoform 9 are expressed in cutaneous T-cell lymphoma (CTCL) cell lines, colorectal carcinomas, breast carcinomas and melanoma. Isoform 9, but not isoform 5A, is expressed in head and neck squamous cell carcinoma (PubMed:12839582).

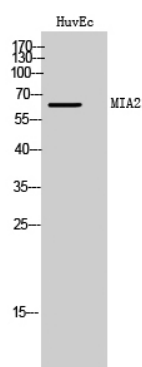
## Background

---

Plays a role in the transport of cargos that are too large to fit into COPII-coated vesicles and require specific mechanisms to be incorporated into membrane-bound carriers and exported from the endoplasmic reticulum (PubMed:[27138255](#), PubMed:[21525241](#), PubMed:[25202031](#), PubMed:[27170179](#)). Plays a role in the secretion of lipoproteins, pre-chylomicrons and pre-VLDLs, by participating in their export from the endoplasmic reticulum (PubMed:[27138255](#)). Thereby, may play a role in cholesterol and triglyceride homeostasis (By similarity). Required for collagen VII (COL7A1) secretion by loading COL7A1 into transport carriers and recruiting PREB/SEC12 at the endoplasmic reticulum exit sites (PubMed:[21525241](#), PubMed:[25202031](#), PubMed:[27170179](#)).

## Images

---



Western Blot analysis of HuvEc cells using MIA2 Polyclonal Antibody

Please note: All products are 'FOR RESEARCH USE ONLY. NOT FOR USE IN DIAGNOSTIC OR THERAPEUTIC PROCEDURES'.