

# MRP2 Polyclonal Antibody

Catalog # AP71023

## Product Information

---

Application	WB
Primary Accession	<a href="#">Q92887</a>
Reactivity	Human
Host	Rabbit
Clonality	Polyclonal
Calculated MW	174207

## Additional Information

---

Gene ID	1244
Other Names	ABCC2; CMOAT; CMOAT1; CMRP; MRP2; Canalicular multispecific organic anion transporter 1; ATP-binding cassette sub-family C member 2; Canalicular multidrug resistance protein; Multidrug resistance-associated protein 2
Dilution	WB~~Western Blot: 1/500 - 1/2000. ELISA: 1/10000. Not yet tested in other applications.
Format	Liquid in PBS containing 50% glycerol, 0.5% BSA and 0.09% (W/V) sodium azide.
Storage Conditions	-20°C

## Protein Information

---

Name	ABCC2 ( <a href="#">HGNC:53</a> )
Function	ATP-dependent transporter of the ATP-binding cassette (ABC) family that binds and hydrolyzes ATP to enable active transport of various substrates including many drugs, toxicants and endogenous compound across cell membranes. Transports a wide variety of conjugated organic anions such as sulfate-, glucuronide- and glutathione (GSH)- conjugates of endo- and xenobiotics substrates (PubMed: <a href="#">10220572</a> , PubMed: <a href="#">10421658</a> , PubMed: <a href="#">11500505</a> , PubMed: <a href="#">16332456</a> ). Mediates hepatobiliary excretion of mono- and bis-glucuronidated bilirubin molecules and therefore play an important role in bilirubin detoxification (PubMed: <a href="#">10421658</a> ). Also mediates hepatobiliary excretion of others glucuronide conjugates such as 17beta-estradiol 17- glucosiduronic acid and leukotriene C4 (PubMed: <a href="#">11500505</a> ). Transports sulfated bile salt such as tauroolithocholate sulfate (PubMed: <a href="#">16332456</a> ). Transports various anticancer drugs, such as anthracycline, vinca alkaloid and methotrexate and HIV-drugs such as protease inhibitors (PubMed: <a href="#">10220572</a> , PubMed: <a href="#">11500505</a> , PubMed: <a href="#">12441801</a> ). Confers resistance to several anti-cancer drugs including

cisplatin, doxorubicin, epirubicin, methotrexate, etoposide and vincristine (PubMed:[10220572](#), PubMed:[11500505](#)).

### Cellular Location

Apical cell membrane; Multi-pass membrane protein. Note=Localized to the apical membrane of enterocytes

### Tissue Location

Expressed by polarized cells in liver, kidney and intestine. The highest expression is found in liver. Expressed in small intestine (PubMed:28408210).

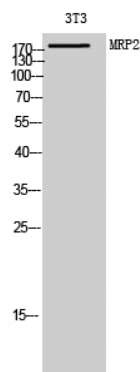
## Background

---

Mediates hepatobiliary excretion of numerous organic anions. May function as a cellular cisplatin transporter.

## Images

---



Western Blot analysis of 3T3 cells using MRP2 Polyclonal Antibody diluted at 1 : 1000

Please note: All products are 'FOR RESEARCH USE ONLY. NOT FOR USE IN DIAGNOSTIC OR THERAPEUTIC PROCEDURES'.