

# MRP3 Polyclonal Antibody

Catalog # AP71024

## Product Information

Application	WB
Primary Accession	<a href="#">O15438</a>
Reactivity	Human
Host	Rabbit
Clonality	Polyclonal
Calculated MW	169343

## Additional Information

Gene ID	8714
Other Names	ABCC3; CMOAT2; MLP2; MRP3; Canalicular multispecific organic anion transporter 2; ATP-binding cassette sub-family C member 3; Multi-specific organic anion transporter D; MOAT-D; Multidrug resistance-associated protein 3
Dilution	WB~~Western Blot: 1/500 - 1/2000. ELISA: 1/5000. Not yet tested in other applications.
Format	Liquid in PBS containing 50% glycerol, 0.5% BSA and 0.09% (W/V) sodium azide.
Storage Conditions	-20°C

## Protein Information

Name	ABCC3 ( <a href="#">HGNC:54</a> )
Synonyms	CMOAT2, MLP2, MRP3
Function	ATP-dependent transporter of the ATP-binding cassette (ABC) family that binds and hydrolyzes ATP to enable active transport of various substrates including many drugs, toxicants and endogenous compound across cell membranes (PubMed: <a href="#">10359813</a> , PubMed: <a href="#">11581266</a> , PubMed: <a href="#">15083066</a> ). Transports glucuronide conjugates such as bilirubin diglucuronide, estradiol-17-beta-o-glucuronide and GSH conjugates such as leukotriene C4 (LTC4) (PubMed: <a href="#">11581266</a> , PubMed: <a href="#">15083066</a> ). Transports also various bile salts (taurocholate, glycocholate, taurochenodeoxycholate-3-sulfate, tauroolithocholate- 3-sulfate) (By similarity). Does not contribute substantially to bile salt physiology but provides an alternative route for the export of bile acids and glucuronides from cholestatic hepatocytes (By similarity). May contribute to regulate the transport of organic compounds in testes across the blood-testis-barrier (Probable). Can confer resistance to various

anticancer drugs, methotrexate, tenoposide and etoposide, by decreasing accumulation of these drugs in cells (PubMed:[10359813](#), PubMed:[11581266](#)).

### Cellular Location

Basolateral cell membrane; Multi-pass membrane protein. Basal cell membrane; Multi-pass membrane protein. Note=Localized to the basolateral membrane of enterocytes (PubMed:28408210). Localized to the basal membrane of Sertoli cells (PubMed:35307651).

### Tissue Location

Mainly expressed in the liver. Also expressed in small intestine, colon, prostate, testis, brain and at a lower level in the kidney. In testis, localized to peritubular myoid cells, Leydig cells, along the basal membrane of Sertoli cells and moderately in the adluminal compartment of the seminiferous tubules (PubMed:35307651)

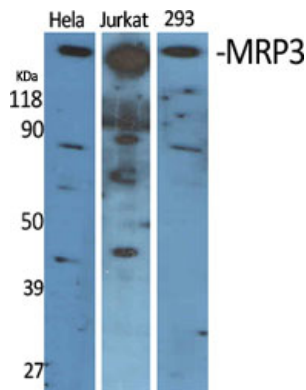
## Background

---

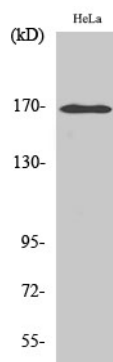
May act as an inducible transporter in the biliary and intestinal excretion of organic anions. Acts as an alternative route for the export of bile acids and glucuronides from cholestatic hepatocytes (By similarity).

## Images

---



Western Blot analysis of various cells using MRP3  
Polyclonal Antibody diluted at 1 : 2000



Western Blot analysis of HepG2 cells using MRP3  
Polyclonal Antibody diluted at 1 : 2000

Please note: All products are 'FOR RESEARCH USE ONLY. NOT FOR USE IN DIAGNOSTIC OR THERAPEUTIC PROCEDURES'.