

MRP-L11 Polyclonal Antibody

Catalog # AP71027

Product Information

Application	WB, IHC-P, IF
Primary Accession	Q9Y3B7
Reactivity	Human, Monkey
Host	Rabbit
Clonality	Polyclonal
Calculated MW	20683

Additional Information

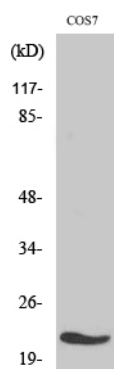
Gene ID	65003
Other Names	MRPL11; CGI-113; 39S ribosomal protein L11; mitochondrial; L11mt; MRP-L11
Dilution	WB~~Western Blot: 1/500 - 1/2000. Immunohistochemistry: 1/100 - 1/300. Immunofluorescence: 1/200 - 1/1000. ELISA: 1/40000. Not yet tested in other applications. IHC-P~~N/A IF~~1:50~200
Format	Liquid in PBS containing 50% glycerol, 0.5% BSA and 0.09% (W/V) sodium azide.
Storage Conditions	-20°C

Protein Information

Name	MRPL11
Cellular Location	Mitochondrion

Images

Western Blot analysis of various cells using MRP-L11
Polyclonal Antibody diluted at 1 : 500



Please note: All products are 'FOR RESEARCH USE ONLY. NOT FOR USE IN DIAGNOSTIC OR THERAPEUTIC PROCEDURES'.