

# MRP-L12 Polyclonal Antibody

Catalog # AP71028

## Product Information

---

Application	WB
Primary Accession	<a href="#">P52815</a>
Reactivity	Human, Mouse
Host	Rabbit
Clonality	Polyclonal
Calculated MW	21348

## Additional Information

---

Gene ID	6182
Other Names	MRPL12; RPML12; 39S ribosomal protein L12; mitochondrial; L12mt; MRP-L12; 5c5-2
Dilution	WB~~Western Blot: 1/500 - 1/2000. ELISA: 1/40000. Not yet tested in other applications.
Format	Liquid in PBS containing 50% glycerol, 0.5% BSA and 0.09% (W/V) sodium azide.
Storage Conditions	-20°C

## Protein Information

---

Name	MRPL12
Synonyms	MRPL7, RPML12
Function	As a component of the mitochondrial large ribosomal subunit, plays a role in mitochondrial translation (PubMed: <a href="#">23603806</a> ). When present in mitochondria as a free protein not associated with the ribosome, associates with mitochondrial RNA polymerase POLRMT to activate transcription (PubMed: <a href="#">22003127</a> ). Required for POLRMT stability (PubMed: <a href="#">26586915</a> ).
Cellular Location	Mitochondrion matrix

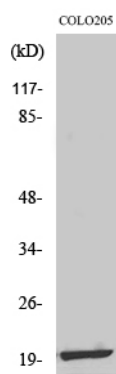
## Background

---

Associates with mitochondrial RNA polymerase to activate transcription.

## Images

---



Western Blot analysis of various cells using MRP-L12  
Polyclonal Antibody

Please note: All products are 'FOR RESEARCH USE ONLY. NOT FOR USE IN DIAGNOSTIC OR THERAPEUTIC PROCEDURES'.