

MRP-L39 Polyclonal Antibody

Catalog # AP71043

Product Information

Application	WB, IHC-P
Primary Accession	Q9NYK5
Reactivity	Human
Host	Rabbit
Clonality	Polyclonal
Calculated MW	38712

Additional Information

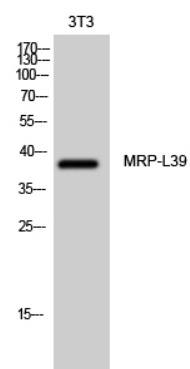
Gene ID	54148
Other Names	MRPL39; C21orf92; MRPL5; RPML5; MSTP003; PRED22; 39S ribosomal protein L39; mitochondrial; L39mt; MRP-L39; 39S ribosomal protein L5, mitochondrial; L5mt; MRP-L5
Dilution	WB~~Western Blot: 1/500 - 1/2000. Immunohistochemistry: 1/100 - 1/300. ELISA: 1/40000. Not yet tested in other applications. IHC-P~~N/A
Format	Liquid in PBS containing 50% glycerol, 0.5% BSA and 0.09% (W/V) sodium azide.
Storage Conditions	-20°C

Protein Information

Name	MRPL39
Synonyms	C21orf92, MRPL5, RPML5
Cellular Location	Mitochondrion
Tissue Location	Isoform 1 is ubiquitously expressed. Isoform 2 is heart-specific

Images

Western Blot analysis of 3T3 cells using MRP-L39
Polyclonal Antibody diluted at 1 : 1000



Please note: All products are 'FOR RESEARCH USE ONLY. NOT FOR USE IN DIAGNOSTIC OR THERAPEUTIC PROCEDURES'.