

MRP-L4 Polyclonal Antibody

Catalog # AP71044

Product Information

Application	WB, IHC-P, IF, ICC, E
Primary Accession	Q9BYD3
Reactivity	Human, Mouse
Host	Rabbit
Clonality	Polyclonal

Additional Information

Other Names	MRPL4; CDABP0091; CGI-28; 39S ribosomal protein L4; mitochondrial; L4mt; MRP-L4
Dilution	WB~Western Blot: 1/500 - 1/2000. Immunohistochemistry: 1/100 - 1/300. ELISA: 1/20000. Not yet tested in other applications. IHC-P~Western Blot: 1/500 - 1/2000. Immunohistochemistry: 1/100 - 1/300. ELISA: 1/20000. Not yet tested in other applications. IF~1:50~200 ICC~N/A E~N/A
Format	Liquid in PBS containing 50% glycerol, 0.5% BSA and 0.09% (W/V) sodium azide.
Storage Conditions	-20°C

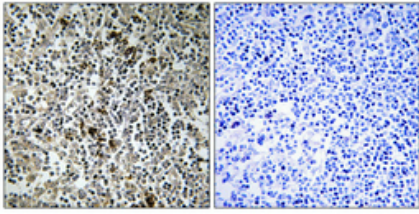
Protein Information

Images



Western Blot analysis of various cells using MRP-L4 Polyclonal Antibody

Immunohistochemical analysis of paraffin-embedded Human lung cancer. Antibody was diluted at



1:100(4°, overnight). High-pressure and temperature Tris-EDTA, pH8.0 was used for antigen retrieval. Negative control (right) obtained from antibody was pre-absorbed by immunogen peptide.

Please note: All products are 'FOR RESEARCH USE ONLY. NOT FOR USE IN DIAGNOSTIC OR THERAPEUTIC PROCEDURES'.