

MRP-L51 Polyclonal Antibody

Catalog # AP71053

Product Information

Application	WB, IHC-P
Primary Accession	Q4U2R6
Reactivity	Human, Mouse
Host	Rabbit
Clonality	Polyclonal
Calculated MW	15095

Additional Information

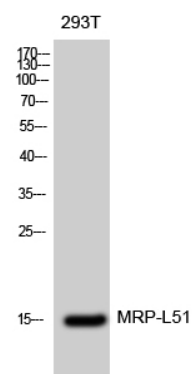
Gene ID	51258
Other Names	MRPL51; MRP64; CDA09; HSPC241; 39S ribosomal protein L51; mitochondrial; L51mt; MRP-L51; bMRP-64; bMRP64
Dilution	WB~~Western Blot: 1/500 - 1/2000. Immunohistochemistry: 1/100 - 1/300. ELISA: 1/20000. Not yet tested in other applications. IHC-P~~N/A
Format	Liquid in PBS containing 50% glycerol, 0.5% BSA and 0.09% (W/V) sodium azide.
Storage Conditions	-20°C

Protein Information

Name	MRPL51
Synonyms	MRP64
Cellular Location	Mitochondrion

Images

Western Blot analysis of 293T cells using MRP-L51
Polyclonal Antibody diluted at 1 : 2000



Please note: All products are 'FOR RESEARCH USE ONLY. NOT FOR USE IN DIAGNOSTIC OR THERAPEUTIC PROCEDURES'.