

MRP-S12 Polyclonal Antibody

Catalog # AP71057

Product Information

Application	WB, IHC-P
Primary Accession	O15235
Reactivity	Human, Mouse
Host	Rabbit
Clonality	Polyclonal
Calculated MW	15173

Additional Information

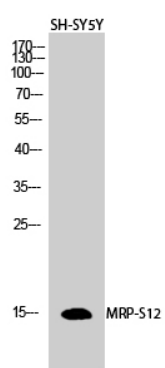
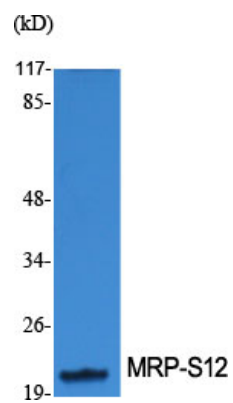
Gene ID	6183
Other Names	MRPS12; RPMS12; RPSM12; 28S ribosomal protein S12; mitochondrial; MRP-S12; S12mt; MT-RPS12
Dilution	WB~~Western Blot: 1/500 - 1/2000. ELISA: 1/10000. Not yet tested in other applications. IHC-P~~N/A
Format	Liquid in PBS containing 50% glycerol, 0.5% BSA and 0.09% (W/V) sodium azide.
Storage Conditions	-20°C

Protein Information

Name	MRPS12
Synonyms	RPMS12, RPSM12
Cellular Location	Mitochondrion.

Images

Western Blot analysis of various cells using MRP-S12
Polyclonal Antibody diluted at 1 : 1000



Western Blot analysis of SH-SY5Y cells using MRP-S12
Polyclonal Antibody diluted at 1 : 1000

Please note: All products are 'FOR RESEARCH USE ONLY. NOT FOR USE IN DIAGNOSTIC OR THERAPEUTIC PROCEDURES'.