

MRP-S27 Polyclonal Antibody

Catalog # AP71067

Product Information

Application	WB
Primary Accession	Q92552
Reactivity	Human
Host	Rabbit
Clonality	Polyclonal
Calculated MW	47611

Additional Information

Gene ID	23107
Other Names	MRPS27; KIAA0264; 28S ribosomal protein S27; mitochondrial; MRP-S27; S27mt
Dilution	WB~~Western Blot: 1/500 - 1/2000. ELISA: 1/20000. Not yet tested in other applications.
Format	Liquid in PBS containing 50% glycerol, 0.5% BSA and 0.09% (W/V) sodium azide.
Storage Conditions	-20°C

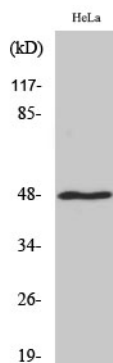
Protein Information

Name	MRPS27 (HGNC:14512)
Synonyms	KIAA0264
Function	RNA-binding component of the mitochondrial small ribosomal subunit (mt-SSU) that plays a role in mitochondrial protein synthesis (PubMed: 22841715). Stimulates mitochondrial mRNA translation of subunit components of the mitochondrial electron transport chain (PubMed: 22841715). Binds to the mitochondrial 12S rRNA (12S mt-rRNA) and tRNA(Glu) (PubMed: 22841715). Involved also in positive regulation of cell proliferation and tumor cell growth (PubMed: 28714366).
Cellular Location	Cytoplasm. Mitochondrion
Tissue Location	Overexpressed in hepatocellular carcinoma tissues compared with adjacent non-tumoral liver tissues (at protein level) (PubMed: 28714366). Ubiquitous (PubMed: 22841715)

Background

RNA-binding component of the mitochondrial small ribosomal subunit (mt-SSU) that plays a role in mitochondrial protein synthesis (PubMed:[22841715](#)). Stimulates mitochondrial mRNA translation of subunit components of the mitochondrial electron transport chain (PubMed:[22841715](#)). Binds to the mitochondrial 12S rRNA (12S mt-rRNA) and tRNA(Glu) (PubMed:[22841715](#)). Involved also in positive regulation of cell proliferation and tumor cell growth (PubMed:[28714366](#)).

Images



Western Blot analysis of various cells using MRP-S27 Polyclonal Antibody

Please note: All products are 'FOR RESEARCH USE ONLY. NOT FOR USE IN DIAGNOSTIC OR THERAPEUTIC PROCEDURES'.