

MRRF Polyclonal Antibody

Catalog # AP71077

Product Information

Application	WB, IHC-P, IF, ICC, E
Primary Accession	Q96E11
Reactivity	Human, Mouse, Rat
Host	Rabbit
Clonality	Polyclonal
Calculated MW	29277

Additional Information

Gene ID	92399
Other Names	MRRF; Ribosome-recycling factor; mitochondrial; RRF; Ribosome-releasing factor, mitochondrial
Dilution	WB~~Western Blot: 1/500 - 1/2000. Immunohistochemistry: 1/100 - 1/300. ELISA: 1/20000. Not yet tested in other applications. IHC-P~~N/A IF~~1:50~200 ICC~~N/A E~~N/A
Format	Liquid in PBS containing 50% glycerol, 0.5% BSA and 0.09% (W/V) sodium azide.
Storage Conditions	-20°C

Protein Information

Name	MRRF (HGNC:7234)
Function	Responsible for the disassembly of ribosomes from messenger RNA at the termination of mitochondrial protein biosynthesis (PubMed: 19716793 , PubMed: 33878294). Acts in collaboration with GFM2 (PubMed: 33878294). Promotes mitochondrial ribosome recycling by dissolution of intersubunit contacts (PubMed: 33878294).
Cellular Location	Mitochondrion.

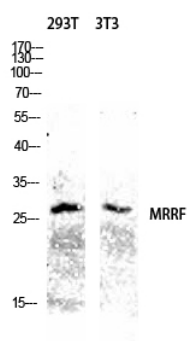
Background

Responsible for the release of ribosomes from messenger RNA at the termination of protein biosynthesis. May increase the efficiency of translation by recycling ribosomes from one round of translation to another (By similarity).

Images



Western Blot analysis of various cells using MRRF
Polyclonal Antibody diluted at 1 : 1000



Western blot analysis of 293T 3T3 lysis using MRRF
antibody. Antibody was diluted at 1:1000

Please note: All products are 'FOR RESEARCH USE ONLY. NOT FOR USE IN DIAGNOSTIC OR THERAPEUTIC PROCEDURES'.