

MSY2 Polyclonal Antibody

Catalog # AP71089

Product Information

Application	WB, IHC-P, IF, ICC, E
Primary Accession	Q9Y2T7
Reactivity	Human, Mouse
Host	Rabbit
Clonality	Polyclonal
Calculated MW	38518

Additional Information

Gene ID	51087
Other Names	YBX2; CSDA3; MSY2; Y-box-binding protein 2; Contrin; DNA-binding protein C; Dbpc; Germ cell-specific Y-box-binding protein; MSY2 homolog
Dilution	WB~~Western Blot: 1/500 - 1/2000. Immunohistochemistry: 1/100 - 1/300. Immunofluorescence: 1/200 - 1/1000. ELISA: 1/10000. Not yet tested in other applications. IHC-P~~N/A IF~~1:50~200 ICC~~N/A E~~N/A
Format	Liquid in PBS containing 50% glycerol, 0.5% BSA and 0.09% (W/V) sodium azide.
Storage Conditions	-20°C

Protein Information

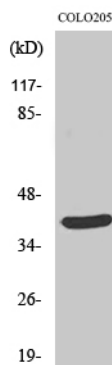
Name	YBX2
Synonyms	CSDA3, MSY2
Function	Major constituent of messenger ribonucleoprotein particles (mRNPs). Involved in the regulation of the stability and/or translation of germ cell mRNAs. Binds to Y-box consensus promoter element. Binds to full-length mRNA with high affinity in a sequence-independent manner. Binds to short RNA sequences containing the consensus site 5'-UCCAUCA- 3' with low affinity and limited sequence specificity. Its binding with maternal mRNAs is necessary for its cytoplasmic retention. May mark specific mRNAs (those transcribed from Y-box promoters) in the nucleus for cytoplasmic storage, thereby linking transcription and mRNA storage/translational delay (By similarity).
Cellular Location	Cytoplasm. Nucleus
Tissue Location	Expressed in oocytes and testicular germ cells in the stage of spermatogonia

to spermatocyte. Also observed placental trophoblasts, as well as in vascular smooth muscle cells in the pulmonary artery, myocardium, and skeletal muscle. Undetectable in epithelial cells in respiratory, gastrointestinal, and urogenital tracts. Up-regulated in various carcinomas and germ cell tumors (at protein level).

Background

Major constituent of messenger ribonucleoprotein particles (mRNPs). Involved in the regulation of the stability and/or translation of germ cell mRNAs. Binds to Y-box consensus promoter element. Binds to full-length mRNA with high affinity in a sequence-independent manner. Binds to short RNA sequences containing the consensus site 5'-UCCAUCA-3' with low affinity and limited sequence specificity. Its binding with maternal mRNAs is necessary for its cytoplasmic retention. May mark specific mRNAs (those transcribed from Y-box promoters) in the nucleus for cytoplasmic storage, thereby linking transcription and mRNA storage/translational delay (By similarity).

Images



Western Blot analysis of various cells using MSY2 Polyclonal Antibody

Please note: All products are 'FOR RESEARCH USE ONLY. NOT FOR USE IN DIAGNOSTIC OR THERAPEUTIC PROCEDURES'.