

ADCK5 Antibody (C-term)

Purified Rabbit Polyclonal Antibody (Pab)

Catalog # AP7108b

Product Information

Application	WB, IHC-P, E
Primary Accession	Q3MIX3
Reactivity	Human
Host	Rabbit
Clonality	Polyclonal
Isotype	Rabbit IgG
Clone Names	RB8211
Calculated MW	65828
Antigen Region	434-464

Additional Information

Gene ID	203054
Other Names	Uncharacterized aarF domain-containing protein kinase 5, 2711-, ADCK5
Target/Specificity	This ADCK5 antibody is generated from rabbits immunized with a KLH conjugated synthetic peptide between 434-464 amino acids from the C-terminal region of human ADCK5.
Dilution	WB~~1:1000 IHC-P~~1:100~500 E~~Use at an assay dependent concentration.
Format	Purified polyclonal antibody supplied in PBS with 0.09% (W/V) sodium azide. This antibody is prepared by Saturated Ammonium Sulfate (SAS) precipitation followed by dialysis against PBS.
Storage	Maintain refrigerated at 2-8°C for up to 2 weeks. For long term storage store at -20°C in small aliquots to prevent freeze-thaw cycles.
Precautions	ADCK5 Antibody (C-term) is for research use only and not for use in diagnostic or therapeutic procedures.

Protein Information

Name	ADCK5
Function	The function of this protein is not yet clear. It is not known if it has protein kinase activity and what type of substrate it would phosphorylate (Ser, Thr or Tyr).
Cellular Location	Membrane; Single-pass membrane protein

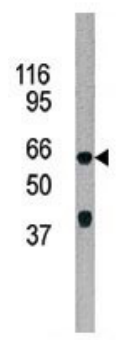
Background

ADCK5 is member of the AarF domain containing kinase family.

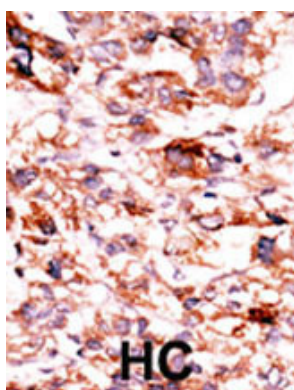
References

Ota, T., et al., Nat. Genet. 36(1):40-45 (2004).

Images



The anti-ADCK5 Pab (Cat. #AP7108b) is used in Western blot to detect ADCK5 in 293 cell line lysate.



Formalin-fixed and paraffin-embedded human cancer tissue reacted with the primary antibody, which was peroxidase-conjugated to the secondary antibody, followed by AEC staining. This data demonstrates the use of this antibody for immunohistochemistry; clinical relevance has not been evaluated. BC = breast carcinoma; HC = hepatocarcinoma.

Please note: All products are 'FOR RESEARCH USE ONLY. NOT FOR USE IN DIAGNOSTIC OR THERAPEUTIC PROCEDURES'.