

# Mucin 13 Polyclonal Antibody

Catalog # AP71104

## Product Information

---

<b>Application</b>	WB, IHC-P, IF
<b>Primary Accession</b>	<a href="#">Q9H3R2</a>
<b>Reactivity</b>	Human
<b>Host</b>	Rabbit
<b>Clonality</b>	Polyclonal
<b>Calculated MW</b>	54604

## Additional Information

---

<b>Gene ID</b>	56667
<b>Other Names</b>	MUC13; DRCC1; RECC; Mucin-13; MUC-13; Down-regulated in colon cancer 1
<b>Dilution</b>	WB~~Western Blot: 1/500 - 1/2000. Immunohistochemistry: 1/100 - 1/300. Immunofluorescence: 1/200 - 1/1000. ELISA: 1/20000. Not yet tested in other applications. IHC-P~~N/A IF~~1:50~200
<b>Format</b>	Liquid in PBS containing 50% glycerol, 0.5% BSA and 0.09% (W/V) sodium azide.
<b>Storage Conditions</b>	-20°C

## Protein Information

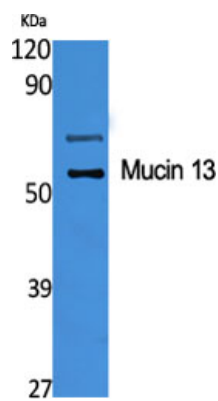
---

<b>Name</b>	MUC13
<b>Synonyms</b>	DRCC1, RECC
<b>Function</b>	Epithelial and hemopoietic transmembrane mucin that may play a role in cell signaling.
<b>Cellular Location</b>	Cell membrane; Single-pass type I membrane protein Apical cell membrane. Secreted. Note=Also exists as a soluble form
<b>Tissue Location</b>	Highly expressed in epithelial tissues, particularly those of the gastrointestinal and respiratory tracts, such as large intestine and trachea, followed by kidney, small intestine, appendix and stomach.

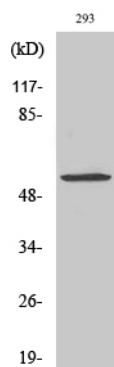
## Background

---

Epithelial and hemopoietic transmembrane mucin that may play a role in cell signaling.



Western Blot analysis of various cells using Mucin 13  
Polyclonal Antibody diluted at 1 : 1000



Western Blot analysis of COLO205 cells using Mucin 13  
Polyclonal Antibody diluted at 1 : 1000

Please note: All products are 'FOR RESEARCH USE ONLY. NOT FOR USE IN DIAGNOSTIC OR THERAPEUTIC PROCEDURES'.