

# Myomesin-2 Polyclonal Antibody

Catalog # AP71130

## Product Information

---

Application	WB
Primary Accession	<a href="#">P54296</a>
Reactivity	Human, Mouse, Monkey
Host	Rabbit
Clonality	Polyclonal
Calculated MW	164869

## Additional Information

---

Gene ID	9172
Other Names	MYOM2; Myomesin-2; 165 kDa connectin-associated protein; 165 kDa titin-associated protein; M-protein; Myomesin family member 2
Dilution	WB~~Western Blot: 1/500 - 1/2000. ELISA: 1/40000. Not yet tested in other applications.
Format	Liquid in PBS containing 50% glycerol, 0.5% BSA and 0.09% (W/V) sodium azide.
Storage Conditions	-20°C

## Protein Information

---

Name	MYOM2
Function	Major component of the vertebrate myofibrillar M band. Binds myosin, titin, and light meromyosin. This binding is dose dependent.
Cellular Location	Cytoplasm, myofibril, sarcomere, M line

## Background

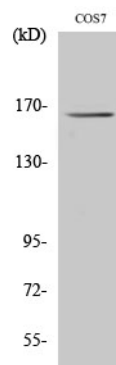
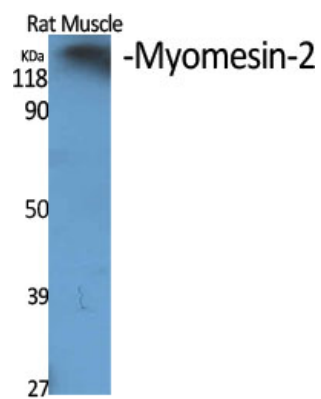
---

Major component of the vertebrate myofibrillar M band. Binds myosin, titin, and light meromyosin. This binding is dose dependent.

## Images

---

Western Blot analysis of various cells using Myomesin-2 Polyclonal Antibody diluted at 1 : 500



Western Blot analysis of HT29 cells using Myomesin-2  
Polyclonal Antibody diluted at 1 : 500

Please note: All products are 'FOR RESEARCH USE ONLY. NOT FOR USE IN DIAGNOSTIC OR THERAPEUTIC PROCEDURES'.