

NARFL Polyclonal Antibody

Catalog # AP71163

Product Information

Application	WB, IHC-P
Primary Accession	Q9H6Q4
Reactivity	Human
Host	Rabbit
Clonality	Polyclonal
Calculated MW	53020

Additional Information

Gene ID	64428
Other Names	NARFL; PRN; Cytosolic Fe-S cluster assembly factor NARFL; Iron-only hydrogenase-like protein 1; IOP1; Nuclear prelamin A recognition factor-like protein; Protein related to Narf
Dilution	WB~~Western Blot: 1/500 - 1/2000. Immunohistochemistry: 1/100 - 1/300. ELISA: 1/40000. Not yet tested in other applications. IHC-P~~N/A
Format	Liquid in PBS containing 50% glycerol, 0.5% BSA and 0.09% (W/V) sodium azide.
Storage Conditions	-20°C

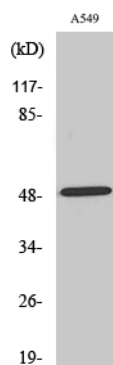
Protein Information

Name	CIAO3 (HGNC:14179)
Function	Component of the cytosolic iron-sulfur protein assembly (CIA) complex, a multiprotein complex that mediates the incorporation of iron-sulfur cluster into extramitochondrial Fe/S proteins. Seems to negatively regulate the level of HIF1A expression, although this effect could be indirect.
Tissue Location	Widely expressed..

Background

Component of the cytosolic iron-sulfur protein assembly (CIA) complex, a multiprotein complex that mediates the incorporation of iron-sulfur cluster into extramitochondrial Fe/S proteins. Seems to negatively regulate the level of HIF1A expression, although this effect could be indirect.

Images



Western Blot analysis of various cells using NARFL Polyclonal Antibody cells nucleus extracted by Minute TM Cytoplasmic and Nuclear Fractionation kit (SC-003, Inventbiotech, MN, USA).

Please note: All products are 'FOR RESEARCH USE ONLY. NOT FOR USE IN DIAGNOSTIC OR THERAPEUTIC PROCEDURES'.