

# NBPF7 Polyclonal Antibody

Catalog # AP71170

## Product Information

<b>Application</b>	WB
<b>Primary Accession</b>	<a href="#">P0C2Y1</a>
<b>Reactivity</b>	Human
<b>Host</b>	Rabbit
<b>Clonality</b>	Polyclonal
<b>Calculated MW</b>	48090

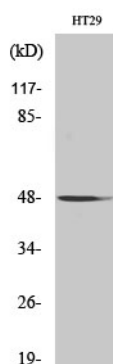
## Additional Information

<b>Other Names</b>	NBPF7; Putative neuroblastoma breakpoint family member 7
<b>Dilution</b>	WB~~Western Blot: 1/500 - 1/2000. ELISA: 1/40000. Not yet tested in other applications.
<b>Format</b>	Liquid in PBS containing 50% glycerol, 0.5% BSA and 0.09% (W/V) sodium azide.
<b>Storage Conditions</b>	-20°C

## Protein Information

<b>Name</b>	NBPF7P ( <a href="#">HGNC:31989</a> )
<b>Synonyms</b>	NBPF7
<b>Cellular Location</b>	Cytoplasm.

## Images



Western Blot analysis of various cells using NBPF7 Polyclonal Antibody

Please note: All products are 'FOR RESEARCH USE ONLY. NOT FOR USE IN DIAGNOSTIC OR THERAPEUTIC PROCEDURES'.