

NCKX4 Polyclonal Antibody

Catalog # AP71177

Product Information

Application	WB
Primary Accession	Q8NFF2
Reactivity	Human, Mouse, Rat
Host	Rabbit
Clonality	Polyclonal
Calculated MW	69042

Additional Information

Gene ID	123041
Other Names	SLC24A4; NCKX4; Sodium/potassium/calcium exchanger 4; Na(+)/K(+)/Ca(2+)-exchange protein 4; Solute carrier family 24 member 4
Dilution	WB~~Western Blot: 1/500 - 1/2000. ELISA: 1/40000. Not yet tested in other applications.
Format	Liquid in PBS containing 50% glycerol, 0.5% BSA and 0.09% (W/V) sodium azide.
Storage Conditions	-20°C

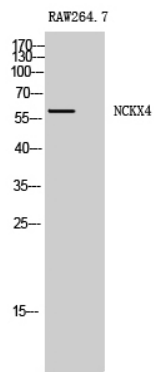
Protein Information

Name	SLC24A4 (HGNC:10978)
Function	Calcium, potassium:sodium antiporter that transports 1 Ca(2+) and 1 K(+) in exchange for 4 Na(+) (PubMed: 12379639 , PubMed: 26631410). Controls the rapid response termination and proper regulation of adaptation in olfactory sensory neurons (OSNs) which subsequently influences how odor information is encoded and perceived (By similarity). May play a role in calcium transport during amelogenesis (PubMed: 23375655 , PubMed: 24621671).
Cellular Location	Cell membrane; Multi-pass membrane protein. Cytoplasm {ECO:0000250 UniProtKB:Q8CGQ8}
Tissue Location	Expressed abundantly in all regions of the brain, aorta, lung and thymus (PubMed:12379639). Expressed at lower levels in the stomach and intestine (PubMed:12379639)

Background

Transports 1 Ca^{2+} and 1 K^{+} in exchange for 4 Na^{+} . Controls the rapid response termination and proper regulation of adaptation in olfactory sensory neurons (OSNs) which subsequently influences how odor information is encoded and perceived. May play a role in calcium transport during amelogenesis (By similarity).

Images



Western Blot analysis of RAW264.7 cells using NCKX4 Polyclonal Antibody

Please note: All products are 'FOR RESEARCH USE ONLY. NOT FOR USE IN DIAGNOSTIC OR THERAPEUTIC PROCEDURES'.