

NEDL2 Polyclonal Antibody

Catalog # AP71210

Product Information

Application	WB, E
Primary Accession	Q9P2P5
Reactivity	Human, Rat, Mouse
Host	Rabbit
Clonality	Polyclonal
Calculated MW	175769

Additional Information

Gene ID	57520
Other Names	HECW2; KIAA1301; NEDL2; E3 ubiquitin-protein ligase HECW2; HECT; C2 and WW domain-containing protein 2; NEDD4-like E3 ubiquitin-protein ligase 2
Dilution	WB~~Western Blot: 1/500 - 1/2000. ELISA: 1/10000. Not yet tested in other applications. E~~N/A
Format	Liquid in PBS containing 50% glycerol, 0.5% BSA and 0.09% (W/V) sodium azide.
Storage Conditions	-20°C

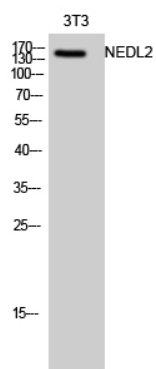
Protein Information

Name	HECW2
Synonyms	KIAA1301, NEDL2
Function	E3 ubiquitin-protein ligase that mediates ubiquitination of TP73. Acts to stabilize TP73 and enhance activation of transcription by TP73 (PubMed: 12890487). Involved in the regulation of mitotic metaphase/anaphase transition (PubMed: 24163370).
Cellular Location	Cytoplasm. Cytoplasm, cytoskeleton, spindle
Tissue Location	Predominantly expressed in adult brain, lung and heart.

Background

E3 ubiquitin-protein ligase that mediates ubiquitination of TP73. Acts to stabilize TP73 and enhance activation of transcription by TP73 (PubMed:[12890487](#)). Involved in the regulation of mitotic metaphase/anaphase transition (PubMed:[24163370](#)).

Images



Western Blot analysis of 3T3 cells using NEDL2 Polyclonal Antibody diluted at 1 : 1000

Please note: All products are 'FOR RESEARCH USE ONLY. NOT FOR USE IN DIAGNOSTIC OR THERAPEUTIC PROCEDURES'.