

# Neurofibromin Polyclonal Antibody

Catalog # AP71248

## Product Information

---

<b>Application</b>	WB, IF
<b>Primary Accession</b>	<a href="#">P21359</a>
<b>Reactivity</b>	Human, Mouse, Rat
<b>Host</b>	Rabbit
<b>Clonality</b>	Polyclonal
<b>Calculated MW</b>	319372

## Additional Information

---

<b>Gene ID</b>	4763
<b>Other Names</b>	NF1; Neurofibromin; Neurofibromatosis-related protein NF-1
<b>Dilution</b>	WB~~Western Blot: 1/500 - 1/2000. Immunofluorescence: 1/200 - 1/1000. ELISA: 1/20000. Not yet tested in other applications. IF~~1:50~200
<b>Format</b>	Liquid in PBS containing 50% glycerol, 0.5% BSA and 0.09% (W/V) sodium azide.
<b>Storage Conditions</b>	-20°C

## Protein Information

---

<b>Name</b>	NF1
<b>Function</b>	Stimulates the GTPase activity of Ras. NF1 shows greater affinity for Ras GAP, but lower specific activity. May be a regulator of Ras activity.
<b>Cellular Location</b>	Nucleus. Nucleus, nucleolus. Cell membrane
<b>Tissue Location</b>	Detected in brain, peripheral nerve, lung, colon and muscle.

## Background

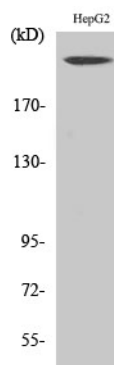
---

Stimulates the GTPase activity of Ras. NF1 shows greater affinity for Ras GAP, but lower specific activity. May be a regulator of Ras activity.

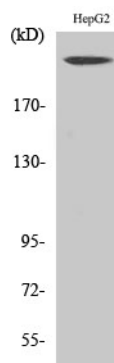
## Images

---

Western Blot analysis of various cells using



## Neurofibromin Polyclonal Antibody



## Western Blot analysis of HepG2 cells using Neurofibromin Polyclonal Antibody

Please note: All products are 'FOR RESEARCH USE ONLY. NOT FOR USE IN DIAGNOSTIC OR THERAPEUTIC PROCEDURES'.