

# Neuromedin-S Polyclonal Antibody

Catalog # AP71250

## Product Information

---

<b>Application</b>	WB, IHC-P, IF, ICC, E
<b>Primary Accession</b>	<a href="#">Q5H8A3</a>
<b>Reactivity</b>	Human, Rat, Mouse
<b>Host</b>	Rabbit
<b>Clonality</b>	Polyclonal
<b>Calculated MW</b>	17731

## Additional Information

---

<b>Gene ID</b>	129521
<b>Other Names</b>	NMS; Neuromedin-S
<b>Dilution</b>	WB~~Western Blot: 1/500 - 1/2000. Immunohistochemistry: 1/100 - 1/300. ELISA: 1/40000. Not yet tested in other applications. IHC-P~~N/A IF~~1:50~200 ICC~~N/A E~~N/A
<b>Format</b>	Liquid in PBS containing 50% glycerol, 0.5% BSA and 0.09% (W/V) sodium azide.
<b>Storage Conditions</b>	-20°C

## Protein Information

---

<b>Name</b>	NMS
<b>Function</b>	Implicated in the regulation of circadian rhythms through autocrine and/or paracrine actions.
<b>Cellular Location</b>	Secreted.

## Background

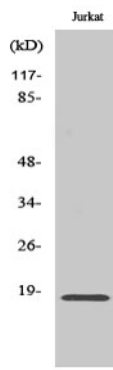
---

Implicated in the regulation of circadian rhythms through autocrine and/or paracrine actions.

## Images

---

Western Blot analysis of various cells using Neuromedin-S Polyclonal Antibody diluted at 1 : 1000



Please note: All products are 'FOR RESEARCH USE ONLY. NOT FOR USE IN DIAGNOSTIC OR THERAPEUTIC PROCEDURES'.