

NGEP Polyclonal Antibody

Catalog # AP71296

Product Information

Application	WB, IHC-P, IF
Primary Accession	Q6IWH7
Reactivity	Human
Host	Rabbit
Clonality	Polyclonal
Calculated MW	105532

Additional Information

Gene ID	50636
Other Names	ANO7; NGEP; PCANAP5; TMEM16G; Anoctamin-7; Dresden transmembrane protein of the prostate; D-TMPP; IPCA-5; New gene expressed in prostate; Prostate cancer-associated protein 5; Transmembrane protein 16G
Dilution	WB~~Western Blot: 1/500 - 1/2000. Immunohistochemistry: 1/100 - 1/300. Immunofluorescence: 1/200 - 1/1000. ELISA: 1/20000. Not yet tested in other applications. IHC-P~~N/A IF~~1:50~200
Format	Liquid in PBS containing 50% glycerol, 0.5% BSA and 0.09% (W/V) sodium azide.
Storage Conditions	-20°C

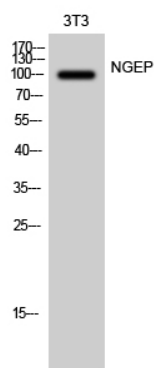
Protein Information

Name	ANO7
Synonyms	NGEP, PCANAP5, TMEM16G
Function	Has calcium-dependent phospholipid scramblase activity; scrambles phosphatidylserine, phosphatidylcholine and galactosylceramide (By similarity). Does not exhibit calcium-activated chloride channel (CaCC) activity (PubMed: 22075693). May play a role in cell-cell interactions (PubMed: 17308099).
Cellular Location	[Isoform 1]: Cell membrane; Multi-pass membrane protein. Cell junction. Endoplasmic reticulum. Note=Concentrates at sites of cell-cell contact (PubMed:17308099). Shows an intracellular localization according to PubMed:22075693 and PubMed:20056604
Tissue Location	Specifically expressed in epithelial cells of the prostate (at protein level).

Background

Has calcium-dependent phospholipid scramblase activity; scrambles phosphatidylserine, phosphatidylcholine and galactosylceramide (By similarity). Does not exhibit calcium- activated chloride channel (CaCC) activity. May play a role in cell-cell interactions.

Images



Western Blot analysis of 3T3 cells using NGEP Polyclonal Antibody diluted at 1 : 1000

Please note: All products are 'FOR RESEARCH USE ONLY. NOT FOR USE IN DIAGNOSTIC OR THERAPEUTIC PROCEDURES'.