

# Nkx-6.3 Polyclonal Antibody

Catalog # AP71327

## Product Information

Application	WB, IF, ICC, E
Primary Accession	<a href="#">A6NJ46</a>
Reactivity	Human, Mouse, Monkey
Host	Rabbit
Clonality	Polyclonal
Calculated MW	28948

## Additional Information

Gene ID	157848
Other Names	NKX6-3; Homeobox protein Nkx-6.3
Dilution	WB~~Western Blot: 1/500 - 1/2000. Immunofluorescence: 1/200 - 1/1000. ELISA: 1/10000. Not yet tested in other applications. IF~~1:50~200 ICC~~N/A E~~N/A
Format	Liquid in PBS containing 50% glycerol, 0.5% BSA and 0.09% (W/V) sodium azide.
Storage Conditions	-20°C

## Protein Information

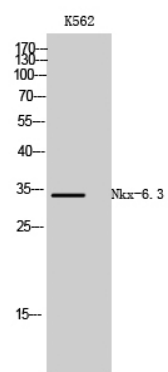
Name	NKX6-3
Function	Putative transcription factor, which may be involved in patterning of central nervous system and pancreas.
Cellular Location	Nucleus {ECO:0000255 PROSITE-ProRule:PRU00108}.

## Background

Putative transcription factor, which may be involved in patterning of central nervous system and pancreas.

## Images

Western Blot analysis of K562 cells using Nkx-6.3  
Polyclonal Antibody cells nucleus extracted by Minute TM



Cytoplasmic and Nuclear Fractionation kit  
(SC-003, Inventbiotech, MN, USA).

Please note: All products are 'FOR RESEARCH USE ONLY. NOT FOR USE IN DIAGNOSTIC OR THERAPEUTIC PROCEDURES'.