

NOL10 Polyclonal Antibody

Catalog # AP71346

Product Information

Application	WB, IHC-P
Primary Accession	Q9BSC4
Reactivity	Human
Host	Rabbit
Clonality	Polyclonal
Calculated MW	80302

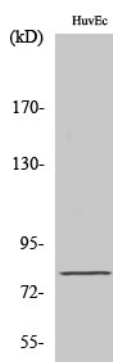
Additional Information

Gene ID	79954
Other Names	NOL10; Nucleolar protein 10
Dilution	WB~~Western Blot: 1/500 - 1/2000. Immunohistochemistry: 1/100 - 1/300. ELISA: 1/40000. Not yet tested in other applications. IHC-P~~N/A
Format	Liquid in PBS containing 50% glycerol, 0.5% BSA and 0.09% (W/V) sodium azide.
Storage Conditions	-20°C

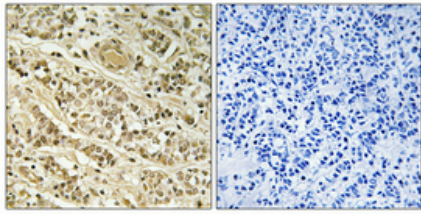
Protein Information

Name	NOL10
Cellular Location	Nucleus, nucleolus.

Images



Western Blot analysis of various cells using NOL10 Polyclonal Antibody cells nucleus extracted by Minute TM Cytoplasmic and Nuclear Fractionation kit (SC-003, Invent biotech, MN, USA).



Immunohistochemical analysis of paraffin-embedded Human breast cancer. Antibody was diluted at 1:100(4°,overnight). High-pressure and temperature Tris-EDTA,pH8.0 was used for antigen retrieval. Negative contrl (right) obtaned from antibody was pre-absorbed by immunogen peptide.

Please note: All products are 'FOR RESEARCH USE ONLY. NOT FOR USE IN DIAGNOSTIC OR THERAPEUTIC PROCEDURES'.