

# NPY2-R Polyclonal Antibody

Catalog # AP71367

## Product Information

---

<b>Application</b>	WB, IF
<b>Primary Accession</b>	<a href="#">P49146</a>
<b>Reactivity</b>	Human, Mouse, Rat
<b>Host</b>	Rabbit
<b>Clonality</b>	Polyclonal
<b>Calculated MW</b>	42731

## Additional Information

---

<b>Gene ID</b>	4887
<b>Other Names</b>	NPY2R; Neuropeptide Y receptor type 2; NPY2-R; NPY-Y2 receptor; Y2 receptor
<b>Dilution</b>	WB~~Western Blot: 1/500 - 1/2000. Immunofluorescence: 1/200 - 1/1000. ELISA: 1/5000. Not yet tested in other applications. IF~~1:50~200
<b>Format</b>	Liquid in PBS containing 50% glycerol, 0.5% BSA and 0.09% (W/V) sodium azide.
<b>Storage Conditions</b>	-20°C

## Protein Information

---

<b>Name</b>	NPY2R
<b>Function</b>	Receptor for neuropeptide Y and peptide YY. The rank order of affinity of this receptor for pancreatic polypeptides is PYY > NPY > PYY (3-36) > NPY (2-36) > [Ile-31, Gln-34] PP > [Leu-31, Pro-34] NPY > PP, [Pro-34] PYY and NPY free acid.
<b>Cellular Location</b>	Cell membrane; Multi-pass membrane protein.
<b>Tissue Location</b>	High levels in amygdala, corpus callosum, hippocampus and subthalamic nucleus. Also detectable in caudate nucleus, hypothalamus and substantia nigra

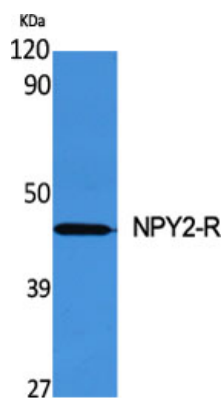
## Background

---

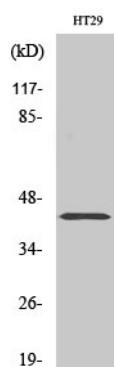
Receptor for neuropeptide Y and peptide YY. The rank order of affinity of this receptor for pancreatic polypeptides is PYY > NPY > PYY (3-36) > NPY (2-36) > [Ile-31, Gln-34] PP > [Leu- 31, Pro-34] NPY > PP, [Pro-34] PYY and NPY free acid.

## Images

---



Western Blot analysis of various cells using NPY2-R  
Polyclonal Antibody diluted at 1 : 500



Western Blot analysis of HT29 cells using NPY2-R  
Polyclonal Antibody diluted at 1 : 500

Please note: All products are 'FOR RESEARCH USE ONLY. NOT FOR USE IN DIAGNOSTIC OR THERAPEUTIC PROCEDURES'.