

# Nrf3 Polyclonal Antibody

Catalog # AP71373

## Product Information

---

Application	WB, E
Primary Accession	<a href="#">Q9Y4A8</a>
Reactivity	Human, Rat, Mouse
Host	Rabbit
Clonality	Polyclonal
Calculated MW	76154

## Additional Information

---

Gene ID	9603
Other Names	NFE2L3; NRF3; Nuclear factor erythroid 2-related factor 3; NF-E2-related factor 3; NFE2-related factor 3; Nuclear factor; erythroid derived 2, like 3
Dilution	WB~~Western Blot: 1/500 - 1/2000. ELISA: 1/10000. Not yet tested in other applications. E~~N/A
Format	Liquid in PBS containing 50% glycerol, 0.5% BSA and 0.09% (W/V) sodium azide.
Storage Conditions	-20°C

## Protein Information

---

Name	NFE2L3
Synonyms	NRF3
Function	Activates erythroid-specific, globin gene expression.
Cellular Location	Nucleus {ECO:0000255 PROSITE-ProRule:PRU00978}.
Tissue Location	Highly expressed in human placenta and also in B- cell and monocyte cell lines. Low expression in heart, brain, lung, skeletal muscle, kidney and pancreas.

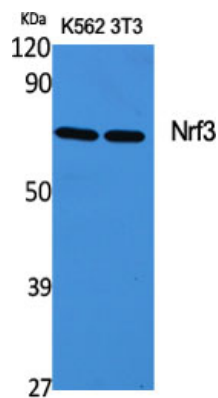
## Background

---

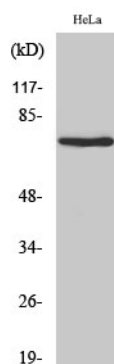
Activates erythroid-specific, globin gene expression.

## Images

---



Western Blot analysis of various cells using Nrf3 Polyclonal Antibody cells nucleus extracted by Minute TM Cytoplasmic and Nuclear Fractionation kit (SC-003, Inventbiotech, MN, USA).



Western Blot analysis of HeLa cells using Nrf3 Polyclonal Antibody cells nucleus extracted by Minute TM Cytoplasmic and Nuclear Fractionation kit (SC-003, Inventbiotech, MN, USA).

Please note: All products are 'FOR RESEARCH USE ONLY. NOT FOR USE IN DIAGNOSTIC OR THERAPEUTIC PROCEDURES'.