

# NSF Polyclonal Antibody

Catalog # AP71378

## Product Information

---

<b>Application</b>	WB
<b>Primary Accession</b>	<a href="#">P46459</a>
<b>Reactivity</b>	Human, Mouse, Rat
<b>Host</b>	Rabbit
<b>Clonality</b>	Polyclonal
<b>Calculated MW</b>	82594

## Additional Information

---

<b>Gene ID</b>	4905
<b>Other Names</b>	NSF; Vesicle-fusing ATPase; N-ethylmaleimide-sensitive fusion protein; NEM-sensitive fusion protein; Vesicular-fusion protein NSF
<b>Dilution</b>	WB~~Western Blot: 1/500 - 1/2000. ELISA: 1/40000. Not yet tested in other applications.
<b>Format</b>	Liquid in PBS containing 50% glycerol, 0.5% BSA and 0.09% (W/V) sodium azide.
<b>Storage Conditions</b>	-20°C

## Protein Information

---

<b>Name</b>	NSF
<b>Function</b>	Required for vesicle-mediated transport. Catalyzes the fusion of transport vesicles within the Golgi cisternae. Is also required for transport from the endoplasmic reticulum to the Golgi stack. Seems to function as a fusion protein required for the delivery of cargo proteins to all compartments of the Golgi stack independent of vesicle origin. Interaction with AMPAR subunit GRIA2 leads to influence GRIA2 membrane cycling (By similarity).
<b>Cellular Location</b>	Cytoplasm.

## Background

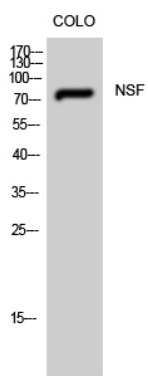
---

Required for vesicle-mediated transport. Catalyzes the fusion of transport vesicles within the Golgi cisternae. Is also required for transport from the endoplasmic reticulum to the Golgi stack. Seems to function as a fusion protein required for the delivery of cargo proteins to all compartments of the Golgi stack independent of vesicle origin. Interaction with AMPAR subunit GRIA2 leads to influence GRIA2

membrane cycling (By similarity).

Images

---



Western Blot analysis of CoLo cells using NSF Polyclonal Antibody

Please note: All products are 'FOR RESEARCH USE ONLY. NOT FOR USE IN DIAGNOSTIC OR THERAPEUTIC PROCEDURES'.