

# NTF2 Polyclonal Antibody

Catalog # AP71384

## Product Information

Application	WB, IHC-P
Primary Accession	<a href="#">P61970</a>
Reactivity	Human, Mouse, Rat
Host	Rabbit
Clonality	Polyclonal
Calculated MW	14478

## Additional Information

Gene ID	10204
Other Names	NUTF2; NTF2; Nuclear transport factor 2; NTF-2; Placental protein 15; PP15
Dilution	WB~~Western Blot: 1/500 - 1/2000. Immunohistochemistry: 1/100 - 1/300. ELISA: 1/20000. Not yet tested in other applications. IHC-P~~N/A
Format	Liquid in PBS containing 50% glycerol, 0.5% BSA and 0.09% (W/V) sodium azide.
Storage Conditions	-20°C

## Protein Information

Name	NUTF2 ( <a href="#">HGNC:13722</a> )
Function	Mediates the import of GDP-bound RAN from the cytoplasm into the nucleus which is essential for the function of RAN in cargo receptor-mediated nucleocytoplasmic transport. Thereby, plays indirectly a more general role in cargo receptor-mediated nucleocytoplasmic transport. Interacts with GDP-bound RAN in the cytosol, recruits it to the nuclear pore complex via its interaction with nucleoporins and promotes its nuclear import.
Cellular Location	Cytoplasm, cytosol. Nucleus outer membrane {ECO:0000250 UniProtKB:P61972}. Nucleus, nuclear pore complex {ECO:0000250 UniProtKB:P61972}. Nucleus inner membrane {ECO:0000250 UniProtKB:P61972}. Nucleus, nucleoplasm. Note=At steady state it is essentially nucleoplasmic, enriched in nucleoplasmic foci

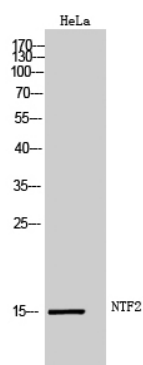
## Background

Mediates the import of GDP-bound RAN from the cytoplasm into the nucleus which is essential for the function of RAN in cargo receptor-mediated nucleocytoplasmic transport. Thereby, plays indirectly a more

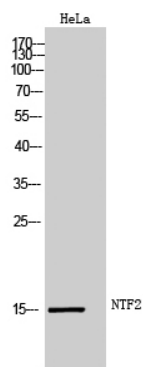
general role in cargo receptor-mediated nucleocytoplasmic transport. Interacts with GDP-bound RAN in the cytosol, recruits it to the nuclear pore complex via its interaction with nucleoporins and promotes its nuclear import.

## Images

---



Western Blot analysis of HeLa cells using NTF2 Polyclonal Antibody



Western Blot analysis of HeLa cells using NTF2 Polyclonal Antibody

Please note: All products are 'FOR RESEARCH USE ONLY. NOT FOR USE IN DIAGNOSTIC OR THERAPEUTIC PROCEDURES'.