

NUB1 Polyclonal Antibody

Catalog # AP71389

Product Information

Application	WB, IHC-P
Primary Accession	Q9Y5A7
Reactivity	Human, Mouse, Monkey
Host	Rabbit
Clonality	Polyclonal
Calculated MW	70538

Additional Information

Gene ID	51667
Other Names	NUB1; NYREN18; NEDD8 ultimate buster 1; Negative regulator of ubiquitin-like proteins 1; Renal carcinoma antigen NY-REN-18
Dilution	WB~~Western Blot: 1/500 - 1/2000. Immunohistochemistry: 1/100 - 1/300. ELISA: 1/20000. Not yet tested in other applications. IHC-P~~N/A
Format	Liquid in PBS containing 50% glycerol, 0.5% BSA and 0.09% (W/V) sodium azide.
Storage Conditions	-20°C

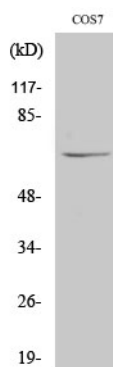
Protein Information

Name	NUB1
Synonyms	NYREN18
Function	Specific down-regulator of the NEDD8 conjugation system. Recruits NEDD8, UBD, and their conjugates to the proteasome for degradation. Isoform 1 promotes the degradation of NEDD8 more efficiently than isoform 2.
Cellular Location	Nucleus. Note=Predominantly nuclear
Tissue Location	Widely expressed with lowest expression in the pancreas for isoform 1 and in leukocytes, liver, prostate and skeletal muscle for isoform 2

Background

Specific down-regulator of the NEDD8 conjugation system. Recruits NEDD8, UBD, and their conjugates to the proteasome for degradation. Isoform 1 promotes the degradation of NEDD8 more efficiently than isoform 2.

Images



Western Blot analysis of various cells using NUB1 Polyclonal Antibody diluted at 1 : 2000 cells nucleus extracted by Minute TM Cytoplasmic and Nuclear Fractionation kit (SC-003, Inventbiotech, MN, USA).

Please note: All products are 'FOR RESEARCH USE ONLY. NOT FOR USE IN DIAGNOSTIC OR THERAPEUTIC PROCEDURES'.