

# NUDC Polyclonal Antibody

Catalog # AP71392

## Product Information

Application	WB, IHC-P
Primary Accession	<a href="#">Q9Y266</a>
Reactivity	Human, Mouse, Rat
Host	Rabbit
Clonality	Polyclonal
Calculated MW	38243

## Additional Information

Gene ID	10726
Other Names	NUDC; Nuclear migration protein nudC; Nuclear distribution protein C homolog
Dilution	WB~~Western Blot: 1/500 - 1/2000. Immunohistochemistry: 1/100 - 1/300. ELISA: 1/10000. Not yet tested in other applications. IHC-P~~N/A
Format	Liquid in PBS containing 50% glycerol, 0.5% BSA and 0.09% (W/V) sodium azide.
Storage Conditions	-20°C

## Protein Information

Name	NUDC
Function	Plays a role in neurogenesis and neuronal migration (By similarity). Necessary for correct formation of mitotic spindles and chromosome separation during mitosis (PubMed: <a href="#">12679384</a> , PubMed: <a href="#">12852857</a> , PubMed: <a href="#">25789526</a> ). Necessary for cytokinesis and cell proliferation (PubMed: <a href="#">12679384</a> , PubMed: <a href="#">12852857</a> ).
Cellular Location	Cytoplasm, cytoskeleton. Nucleus. Cytoplasm, cytoskeleton, spindle. Midbody Note=In a filamentous pattern adjacent to the nucleus of migrating cerebellar granule cells. Colocalizes with tubulin and dynein and with the microtubule organizing center. Distributed throughout the cytoplasm of non-migrating cells. A small proportion is nuclear, in a punctate pattern. Localizes to the mitotic spindle in a EML4-dependent manner (PubMed:25789526).
Tissue Location	Ubiquitous. Highly expressed in fetal liver, kidney, lung and brain. Highly expressed in adult pancreas, kidney, skeletal muscle, liver, lung, placenta, prostate, brain and heart

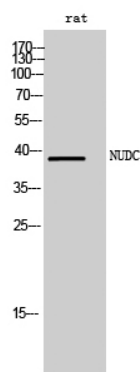
## Background

---

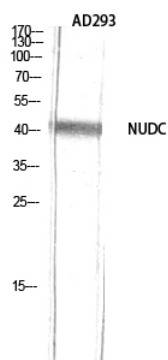
Plays a role in neurogenesis and neuronal migration (By similarity). Necessary for correct formation of mitotic spindles and chromosome separation during mitosis. Necessary for cytokinesis and cell proliferation.

## Images

---



Western Blot analysis of rat cells using NUDC Polyclonal Antibody diluted at 1 : 2000



Western Blot analysis of AD293 using NUDC Polyclonal Antibody diluted at 1 : 2000

Please note: All products are 'FOR RESEARCH USE ONLY. NOT FOR USE IN DIAGNOSTIC OR THERAPEUTIC PROCEDURES'.