

NXF3 Polyclonal Antibody

Catalog # AP71397

Product Information

Application	WB, IHC-P, IF, ICC, E
Primary Accession	Q9H4D5
Reactivity	Human, Rat, Mouse
Host	Rabbit
Clonality	Polyclonal
Calculated MW	60102

Additional Information

Gene ID	56000
Other Names	NXF3; TAPL3; Nuclear RNA export factor 3; TAP-like protein 3; TAPL-3
Dilution	WB~~Western Blot: 1/500 - 1/2000. Immunohistochemistry: 1/100 - 1/300. ELISA: 1/40000. Not yet tested in other applications. IHC-P~~N/A IF~~1:50~200 ICC~~N/A E~~N/A
Format	Liquid in PBS containing 50% glycerol, 0.5% BSA and 0.09% (W/V) sodium azide.
Storage Conditions	-20°C

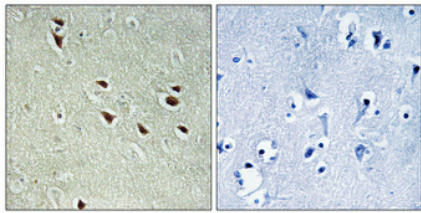
Protein Information

Name	NXF3
Synonyms	TAPL3
Function	May function as a tissue-specific nuclear mRNA export factor.
Cellular Location	Nucleus. Cytoplasm. Note=Shuttles between the nucleus and the cytoplasm
Tissue Location	Expressed at high level in testis and at low level in a small number of tissues

Background

May function as a tissue-specific nuclear mRNA export factor.

Images



Immunohistochemical analysis of paraffin-embedded Human brain. Antibody was diluted at 1:100(4°,overnight). High-pressure and temperature Tris-EDTA,pH8.0 was used for antigen retrieval. Negative contrl (right) obtaned from antibody was pre-absorbed by immunogen peptide.

Please note: All products are 'FOR RESEARCH USE ONLY. NOT FOR USE IN DIAGNOSTIC OR THERAPEUTIC PROCEDURES'.