

# OATP-C Polyclonal Antibody

Catalog # AP71405

## Product Information

Application	WB, E
Primary Accession	<a href="#">Q9Y6L6</a>
Reactivity	Human, Rat, Mouse
Host	Rabbit
Clonality	Polyclonal
Calculated MW	76449

## Additional Information

Gene ID	10599
Other Names	SLCO1B1; LST1; OATP1B1; OATP2; OATPC; SLC21A6; Solute carrier organic anion transporter family member 1B1; Liver-specific organic anion transporter 1; LST-1; OATP-C; Sodium-independent organic anion-transporting polypeptide 2; OATP-2; Solut
Dilution	WB~~Western Blot: 1/500 - 1/2000. ELISA: 1/40000. Not yet tested in other applications. E~~N/A
Format	Liquid in PBS containing 50% glycerol, 0.5% BSA and 0.09% (W/V) sodium azide.
Storage Conditions	-20°C

## Protein Information

Name	SLCO1B1
Synonyms	LST1, OATP1B1, OATP2, OATPC, SLC21A6
Function	Mediates the Na(+)-independent uptake of organic anions (PubMed: <a href="#">10358072</a> , PubMed: <a href="#">15159445</a> , PubMed: <a href="#">17412826</a> ). Shows broad substrate specificity, can transport both organic anions such as bile acid taurocholate (cholytaurine) and conjugated steroids (dehydroepiandrosterone 3-sulfate, 17-beta-glucuronosyl estradiol, and estrone 3-sulfate), as well as eicosanoids (prostaglandin E2, thromboxane B2, leukotriene C4, and leukotriene E4), and thyroid hormones (T4/L-thyroxine, and T3/3,3',5'-triiodo-L-thyronine) (PubMed: <a href="#">10358072</a> , PubMed: <a href="#">10601278</a> , PubMed: <a href="#">10873595</a> , PubMed: <a href="#">11159893</a> , PubMed: <a href="#">12196548</a> , PubMed: <a href="#">12568656</a> , PubMed: <a href="#">15159445</a> , PubMed: <a href="#">15970799</a> , PubMed: <a href="#">16627748</a> , PubMed: <a href="#">17412826</a> , PubMed: <a href="#">19129463</a> , PubMed: <a href="#">26979622</a> ). Can take up bilirubin glucuronides from plasma into the liver, contributing to the detoxification-enhancing liver-blood shuttling loop

(PubMed:[22232210](#)). Involved in the clearance of endogenous and exogenous substrates from the liver (PubMed:[10358072](#), PubMed:[10601278](#)). Transports coproporphyrin I and III, by-products of heme synthesis, and may be involved in their hepatic disposition (PubMed:[26383540](#)). May contribute to regulate the transport of organic compounds in testes across the blood-testis-barrier (Probable). Can transport HMG-CoA reductase inhibitors (also known as statins), such as pravastatin and pitavastatin, a clinically important class of hypolipidemic drugs (PubMed:[10601278](#), PubMed:[15159445](#), PubMed:[15970799](#)). May play an important role in plasma and tissue distribution of the structurally diverse chemotherapeutic drug methotrexate (PubMed:[23243220](#)). May also transport antihypertension agents, such as the angiotensin-converting enzyme (ACE) inhibitor prodrug enalapril, and the highly selective angiotensin II AT1-receptor antagonist valsartan, in the liver (PubMed:[16624871](#), PubMed:[16627748](#)). Shows a pH-sensitive substrate specificity towards prostaglandin E2 and T4 which may be ascribed to the protonation state of the binding site and leads to a stimulation of substrate transport in an acidic microenvironment (PubMed:[19129463](#)). Hydrogencarbonate/HCO<sub>3</sub><sup>-</sup> acts as the probable counteranion that exchanges for organic anions (PubMed:[19129463](#)).

### Cellular Location

Basolateral cell membrane; Multi-pass membrane protein. Basal cell membrane; Multi-pass membrane protein. Note=Detected in basolateral membranes of hepatocytes (PubMed:12196548). Localized to the basal membrane of Sertoli cells (PubMed:35307651).

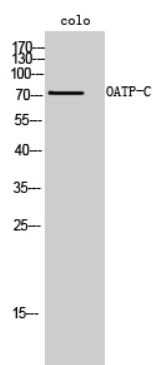
### Tissue Location

Highly expressed in liver, at the basolateral membranes of centrilobular hepatocytes (PubMed:10358072, PubMed:10601278, PubMed:10873595, PubMed:12196548, PubMed:22232210) Expressed in liver (at protein level) (PubMed:15159445). Expressed in fetal liver (PubMed:10873595). Not detected in heart, brain, placenta, lung, skeletal muscle, kidney, pancreas, spleen, thymus, prostate, testis, ovary, small intestine, colon and leukocyte (PubMed:10358072, PubMed:10873595). In testis, primarily localized to the basal membrane of Sertoli cells and weakly expressed in Leydig cells and within the tubules (PubMed:35307651).

## Background

Mediates the Na<sup>(+)</sup>-independent uptake of organic anions such as pravastatin, taurocholate, methotrexate, dehydroepiandrosterone sulfate, 17-beta-glucuronosyl estradiol, estrone sulfate, prostaglandin E2, thromboxane B2, leukotriene C3, leukotriene E4, thyroxine and triiodothyronine. Involved in the clearance of bile acids and organic anions from the liver.

## Images



Western Blot analysis of colo cells using OATP-C Polyclonal Antibody

Please note: All products are 'FOR RESEARCH USE ONLY. NOT FOR USE IN DIAGNOSTIC OR THERAPEUTIC PROCEDURES'.