

# PANK3 Antibody (N-term)

Purified Rabbit Polyclonal Antibody (Pab)

Catalog # AP7161a

## Product Information

---

<b>Application</b>	WB, IHC-P, E
<b>Primary Accession</b>	<a href="#">Q9H999</a>
<b>Other Accession</b>	<a href="#">Q8R2W9</a> , <a href="#">Q08DA5</a>
<b>Reactivity</b>	Human
<b>Predicted</b>	Bovine, Mouse
<b>Host</b>	Rabbit
<b>Clonality</b>	Polyclonal
<b>Isotype</b>	Rabbit IgG
<b>Clone Names</b>	RB5490
<b>Calculated MW</b>	41094
<b>Antigen Region</b>	1-30

## Additional Information

---

<b>Gene ID</b>	79646
<b>Other Names</b>	Pantothenate kinase 3, hPank3, Pantothenic acid kinase 3, PANK3
<b>Target/Specificity</b>	This PANK3 antibody is generated from rabbits immunized with a KLH conjugated synthetic peptide between 1-30 amino acids from the N-terminal region of human PANK3.
<b>Dilution</b>	WB~~1:1000 IHC-P~~1:100~500 E~~Use at an assay dependent concentration.
<b>Format</b>	Purified polyclonal antibody supplied in PBS with 0.09% (W/V) sodium azide. This antibody is prepared by Saturated Ammonium Sulfate (SAS) precipitation followed by dialysis against PBS.
<b>Storage</b>	Maintain refrigerated at 2-8°C for up to 2 weeks. For long term storage store at -20°C in small aliquots to prevent freeze-thaw cycles.
<b>Precautions</b>	PANK3 Antibody (N-term) is for research use only and not for use in diagnostic or therapeutic procedures.

## Protein Information

---

<b>Name</b>	PANK3
<b>Function</b>	Catalyzes the phosphorylation of pantothenate to generate 4'-phosphopantothenate in the first and rate-determining step of coenzyme A (CoA) synthesis.

**Cellular Location**

Cytoplasm {ECO:0000269 | PubMed:23152917, ECO:0000305}

**Tissue Location**

Highly expressed in the liver.

## Background

---

PANK3 belongs to the pantothenate kinase family. Pantothenate kinase is a key regulatory enzyme in the biosynthesis of coenzyme A (CoA) in bacteria and mammalian cells. It catalyzes the first committed step in the universal biosynthetic pathway leading to CoA and is itself subject to regulation through feedback inhibition by CoA. This family member is expressed most abundantly in the liver.

## References

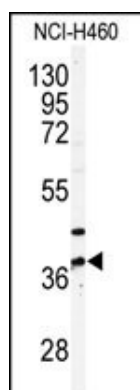
---

Zhou, B., et al., Nat. Genet. 28(4):345-349 (2001).

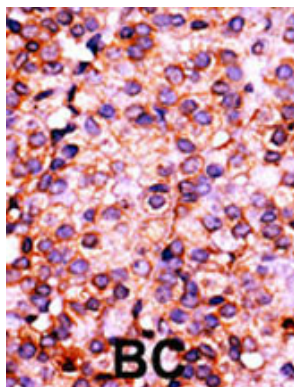
Robishaw, J.D., et al., Am. J. Physiol. 248 (1 PT 1), E1-E9 (1985) (); ()).

## Images

---



Western blot analysis of anti-PANK3 Antibody (N-term) (Cat.#AP7161a) in NCI-H460 cell line lysates (35ug/lane). PANK3(arrow) was detected using the purified Pab.



Formalin-fixed and paraffin-embedded human cancer tissue reacted with the primary antibody, which was peroxidase-conjugated to the secondary antibody, followed by AEC staining. This data demonstrates the use of this antibody for immunohistochemistry; clinical relevance has not been evaluated. BC = breast carcinoma; HC = hepatocarcinoma.

Please note: All products are 'FOR RESEARCH USE ONLY. NOT FOR USE IN DIAGNOSTIC OR THERAPEUTIC PROCEDURES'.