

# ORAOV1 Polyclonal Antibody

Catalog # AP71651

## Product Information

Application	WB, IHC-P, IF
Primary Accession	<a href="#">Q8WV07</a>
Reactivity	Human
Host	Rabbit
Clonality	Polyclonal
Calculated MW	15354

## Additional Information

Gene ID	220064
Other Names	ORAOV1; TAOS1; Oral cancer-overexpressed protein 1; Tumor-amplified and overexpressed sequence 1
Dilution	WB~~Western Blot: 1/500 - 1/2000. Immunohistochemistry: 1/100 - 1/300. Immunofluorescence: 1/200 - 1/1000. ELISA: 1/10000. Not yet tested in other applications. IHC-P~~N/A IF~~1:50~200
Format	Liquid in PBS containing 50% glycerol, 0.5% BSA and 0.09% (W/V) sodium azide.
Storage Conditions	-20°C

## Protein Information

Name	LTO1 {ECO:0000303 PubMed:23318452, ECO:0000312 HGNC:HGNC:17589}
Function	The complex LTO1:YAE1 functions as a target specific adapter that probably recruits apo-ABCE1 to the cytosolic iron-sulfur protein assembly (CIA) complex machinery (PubMed: <a href="#">26182403</a> ). May be required for biogenesis of the large ribosomal subunit and initiation of translation (PubMed: <a href="#">23318452</a> ). May play a role in the regulation of proline metabolism and ROS production (PubMed: <a href="#">24930674</a> ).
Cellular Location	Nucleus {ECO:0000250 UniProtKB:P53846}.
Tissue Location	Widely expressed. Highly expressed in placenta, kidney and skeletal muscle.

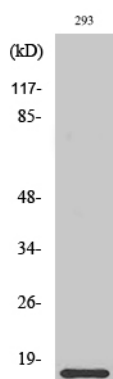
## Background

The complex LTO1:YAE1 functions as a target specific adapter that probably recruits apo-ABCE1 to the cytosolic iron- sulfur protein assembly (CIA) complex machinery (PubMed:[26182403](#)). May be required for

biogenesis of the large ribosomal subunit and initiation of translation (PubMed:[23318452](#)). May play a role in the regulation of proline metabolism and ROS production (PubMed:[24930674](#)).

## Images

---



Western Blot analysis of various cells using ORAOV1  
Polyclonal Antibody diluted at 1 : 2000

Please note: All products are 'FOR RESEARCH USE ONLY. NOT FOR USE IN DIAGNOSTIC OR THERAPEUTIC PROCEDURES'.