

OSR2 Polyclonal Antibody

Catalog # AP71657

Product Information

Application	WB
Primary Accession	Q8N2R0
Reactivity	Human, Mouse, Rat
Host	Rabbit
Clonality	Polyclonal
Calculated MW	35513

Additional Information

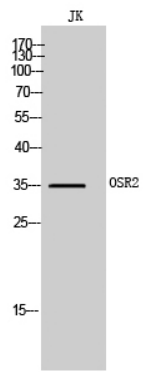
Gene ID	116039
Other Names	OSR2; Protein odd-skipped-related 2
Dilution	WB~~Western Blot: 1/500 - 1/2000. ELISA: 1/40000. Not yet tested in other applications.
Format	Liquid in PBS containing 50% glycerol, 0.5% BSA and 0.09% (W/V) sodium azide.
Storage Conditions	-20°C

Protein Information

Name	OSR2 (HGNC:15830)
Function	May be involved in the development of the mandibular molar tooth germ at the bud stage.
Cellular Location	Nucleus.

Images

Western Blot analysis of JK cells using OSR2 Polyclonal Antibody cells nucleus extracted by Minute TM Cytoplasmic and Nuclear Fractionation kit (SC-003, Invent biotech, MN, USA).



Please note: All products are 'FOR RESEARCH USE ONLY. NOT FOR USE IN DIAGNOSTIC OR THERAPEUTIC PROCEDURES'.