

p130 Cas Polyclonal Antibody

Catalog # AP71672

Product Information

Application	WB, IHC-P, IF, ICC, E
Primary Accession	P56945
Reactivity	Human, Mouse, Rat
Host	Rabbit
Clonality	Polyclonal
Calculated MW	93372

Additional Information

Gene ID	9564
Other Names	BCAR1; CAS; CASS1; CRKAS; Breast cancer anti-estrogen resistance protein 1; CRK-associated substrate; Cas scaffolding protein family member 1; p130cas
Dilution	WB--Western Blot: 1/500 - 1/2000. Immunohistochemistry: 1/100 - 1/300. ELISA: 1/5000. Not yet tested in other applications. IHC-P--Western Blot: 1/500 - 1/2000. Immunohistochemistry: 1/100 - 1/300. ELISA: 1/5000. Not yet tested in other applications. IF--1:50~200 ICC--N/A E--N/A
Format	Liquid in PBS containing 50% glycerol, 0.5% BSA and 0.09% (W/V) sodium azide.
Storage Conditions	-20°C

Protein Information

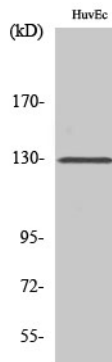
Name	BCAR1
Synonyms	CAS, CASS1, CRKAS
Function	Docking protein which plays a central coordinating role for tyrosine kinase-based signaling related to cell adhesion (PubMed: 12432078 , PubMed: 12832404). Implicated in induction of cell migration and cell branching (PubMed: 12432078 , PubMed: 12832404 , PubMed: 17038317). Involved in the BCAR3-mediated inhibition of TGFB signaling (By similarity).
Cellular Location	Cell junction, focal adhesion. Cytoplasm Cell projection, axon {ECO:0000250 UniProtKB:Q61140} Note=Unphosphorylated form localizes in the cytoplasm (By similarity) Localizes to focal adhesion sites following integrin engagement (By similarity). {ECO:0000250 UniProtKB:Q61140}
Tissue Location	Expressed in B-cells (at protein level) (PubMed:9020138). Widely expressed with an abundant expression in the testis (PubMed:10639512). Low level of

expression seen in the liver, thymus, and peripheral blood leukocytes
(PubMed:10639512)

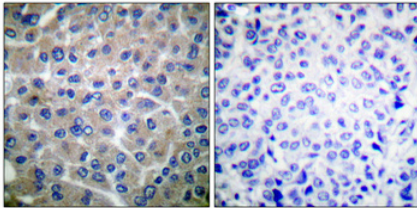
Background

Docking protein which plays a central coordinating role for tyrosine kinase-based signaling related to cell adhesion. Implicated in induction of cell migration. Overexpression confers antiestrogen resistance on breast cancer cells.

Images



Western Blot analysis of various cells using p130 Cas Polyclonal Antibody



Immunohistochemical analysis of paraffin-embedded Human breast cancer. Antibody was diluted at 1:100(4°,overnight). High-pressure and temperature Tris-EDTA,pH8.0 was used for antigen retrieval. Negative contrl (right) obtaned from antibody was pre-absorbed by immunogen peptide.

Please note: All products are 'FOR RESEARCH USE ONLY. NOT FOR USE IN DIAGNOSTIC OR THERAPEUTIC PROCEDURES'.