

# P2RY8 Polyclonal Antibody

Catalog # AP71687

## Product Information

Application	WB, IF
Primary Accession	<a href="#">Q86VZ1</a>
Reactivity	Human
Host	Rabbit
Clonality	Polyclonal
Calculated MW	40635

## Additional Information

Gene ID	286530
Other Names	P2RY8; P2Y purinoceptor 8; P2Y8
Dilution	WB~~Western Blot: 1/500 - 1/2000. Immunofluorescence: 1/200 - 1/1000. ELISA: 1/20000. Not yet tested in other applications. IF~~1:50~200
Format	Liquid in PBS containing 50% glycerol, 0.5% BSA and 0.09% (W/V) sodium azide.
Storage Conditions	-20°C

## Protein Information

Name	P2RY8 {ECO:0000303   PubMed:30842656, ECO:0000312   HGNC:HGNC:15524}
Function	G protein-coupled receptor for S-geranylgeranyl-glutathione (GGG), an endogenous metabolite present in lymphoid tissues. Couples the binding of GGG to the activation of GNA13 and downstream repression of AKT activation in lymphocytes defining their positioning and growth within lymphoid organs (PubMed: <a href="#">25274307</a> , PubMed: <a href="#">30842656</a> , PubMed: <a href="#">34088745</a> ). In lymphoid follicles, confines B cells and follicular helper T cells in germinal centers (GCs) in response to GGG local gradients established by GGT5 (via GGG catabolism) and ABCC1 (via extracellular transport) with lower concentrations of GGG found in the follicular dendritic cell network region around which germinal centers are formed (PubMed: <a href="#">25274307</a> , PubMed: <a href="#">30842656</a> , PubMed: <a href="#">34088745</a> ). In the bone marrow, also in response to GGG gradients established by GGT5 and ABCC1, it restricts chemotactic transmigration of B cells, T cells and NK cells from blood vessels to the bone marrow parenchyma (PubMed: <a href="#">30842656</a> , PubMed: <a href="#">34088745</a> ). Contributes to GNA13-dependent pathway that suppresses GC B cell growth (PubMed: <a href="#">25274307</a> ).
Cellular Location	Cell membrane; Multi-pass membrane protein

## Tissue Location

Barely detectable in normal blood leukocytes. Weaker expression was seen in heart, kidney and lung. Not detected in brain (PubMed:11004484, PubMed:15466006). Expressed in B cells and follicular helper T cells in germinal centers (at protein level) (PubMed:30842656).

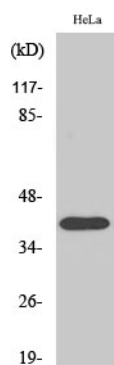
## Background

---

Probable receptor for purines coupled to G-proteins.

## Images

---



Western Blot analysis of various cells using P2RY8  
Polyclonal Antibody diluted at 1 : 2000

Please note: All products are 'FOR RESEARCH USE ONLY. NOT FOR USE IN DIAGNOSTIC OR THERAPEUTIC PROCEDURES'.