

# P2Y11 Polyclonal Antibody

Catalog # AP71688

## Product Information

---

|                          |                        |
|--------------------------|------------------------|
| <b>Application</b>       | WB                     |
| <b>Primary Accession</b> | <a href="#">Q96G91</a> |
| <b>Reactivity</b>        | Human                  |
| <b>Host</b>              | Rabbit                 |
| <b>Clonality</b>         | Polyclonal             |
| <b>Calculated MW</b>     | 40345                  |

## Additional Information

---

|                           |   |
|---------------------------|---|
| <b>Gene ID</b>            | 5032  |
| <b>Other Names</b>        | P2RY11; P2Y purinoceptor 11; P2Y11  |
| <b>Dilution</b>           | WB~~Western Blot: 1/500 - 1/2000. ELISA: 1/10000. Not yet tested in other applications. |
| <b>Format</b>             | Liquid in PBS containing 50% glycerol, 0.5% BSA and 0.09% (W/V) sodium azide.           |
| <b>Storage Conditions</b> | -20°C   |

## Protein Information

---

|                          |  |
|--------------------------|--|
| <b>Name</b>              | P2RY11   |
| <b>Function</b>          | Receptor for ATP and ADP coupled to G-proteins that activate both phosphatidylinositol-calcium and adenylyl cyclase second messenger systems. Not activated by UTP or UDP. |
| <b>Cellular Location</b> | Cell membrane; Multi-pass membrane protein.  |
| <b>Tissue Location</b>   | Highest expression in liver and spleen.  |

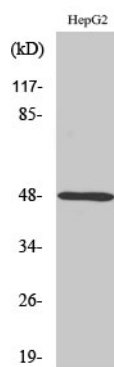
## Background

---

Receptor for ATP and ADP coupled to G-proteins that activate both phosphatidylinositol-calcium and adenylyl cyclase second messenger systems. Not activated by UTP or UDP.

## Images

---



Western Blot analysis of various cells using P2Y11 Polyclonal Antibody

Please note: All products are 'FOR RESEARCH USE ONLY. NOT FOR USE IN DIAGNOSTIC OR THERAPEUTIC PROCEDURES'.