

# p52 S6 kinase Polyclonal Antibody

Catalog # AP71706

## Product Information

---

<b>Application</b>	WB, IF
<b>Primary Accession</b>	<a href="#">Q96S38</a>
<b>Reactivity</b>	Human, Mouse
<b>Host</b>	Rabbit
<b>Clonality</b>	Polyclonal
<b>Calculated MW</b>	118682

## Additional Information

---

<b>Gene ID</b>	26750
<b>Other Names</b>	RPS6KC1; RPK118; Ribosomal protein S6 kinase delta-1; S6K-delta-1; 52 kDa ribosomal protein S6 kinase; Ribosomal S6 kinase-like protein with two PSK domains 118 kDa protein; SPHK1-binding protein
<b>Dilution</b>	WB~~Western Blot: 1/500 - 1/2000. Immunofluorescence: 1/200 - 1/1000. ELISA: 1/20000. Not yet tested in other applications. IF~~1:50~200
<b>Format</b>	Liquid in PBS containing 50% glycerol, 0.5% BSA and 0.09% (W/V) sodium azide.
<b>Storage Conditions</b>	-20°C

## Protein Information

---

<b>Name</b>	RPS6KC1
<b>Synonyms</b>	RPK118
<b>Function</b>	May be involved in transmitting sphingosine-1 phosphate (SPP)-mediated signaling into the cell (PubMed: <a href="#">12077123</a> ). Plays a role in the recruitment of PRDX3 to early endosomes (PubMed: <a href="#">15750338</a> ).
<b>Cellular Location</b>	Cytoplasm. Membrane Early endosome
<b>Tissue Location</b>	Highly expressed in testis, skeletal muscle, brain, heart, placenta, kidney and liver and weakly expressed in thymus, small intestine, lung and colon.

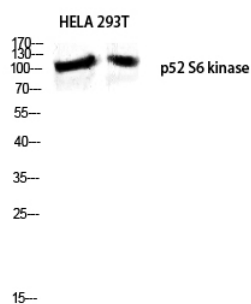
## Background

---

May be involved in transmitting sphingosine-1 phosphate (SPP)-mediated signaling into the cell (PubMed:[12077123](#)). Plays a role in the recruitment of PRDX3 to early endosomes (PubMed:[15750338](#)).

## Images

---



Western blot analysis of HELA 293T lysis using p52 S6 kinase antibody. Antibody was diluted at 1:500

Please note: All products are 'FOR RESEARCH USE ONLY. NOT FOR USE IN DIAGNOSTIC OR THERAPEUTIC PROCEDURES'.