

Paxillin Polyclonal Antibody

Catalog # AP71790

Product Information

Application	WB
Primary Accession	P49023
Reactivity	Human, Mouse, Rat
Host	Rabbit
Clonality	Polyclonal
Calculated MW	64505

Additional Information

Gene ID	5829
Other Names	PXN; Paxillin
Dilution	WB~~Western Blot: 1/500 - 1/2000. ELISA: 1/10000. Not yet tested in other applications.
Format	Liquid in PBS containing 50% glycerol, 0.5% BSA and 0.09% (W/V) sodium azide.
Storage Conditions	-20°C

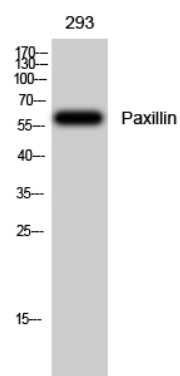
Protein Information

Name	PXN (HGNC:9718)
Function	Cytoskeletal protein involved in actin-membrane attachment at sites of cell adhesion to the extracellular matrix (focal adhesion). Recruits other proteins such as TRIM15 to focal adhesion.
Cellular Location	Cytoplasm, cytoskeleton. Cell junction, focal adhesion. Cytoplasm, cell cortex {ECO:0000250 UniProtKB:Q8VI36}. Note=Colocalizes with integrins at the cell periphery. Colocalize with PXN to membrane ruffles and the leading edge of migrating cells (PubMed:23128389). {ECO:0000250, ECO:0000269 PubMed:23128389}

Background

Cytoskeletal protein involved in actin-membrane attachment at sites of cell adhesion to the extracellular matrix (focal adhesion).

Images



Western Blot analysis of 293 cells using Paxillin Polyclonal Antibody

Please note: All products are 'FOR RESEARCH USE ONLY. NOT FOR USE IN DIAGNOSTIC OR THERAPEUTIC PROCEDURES'.